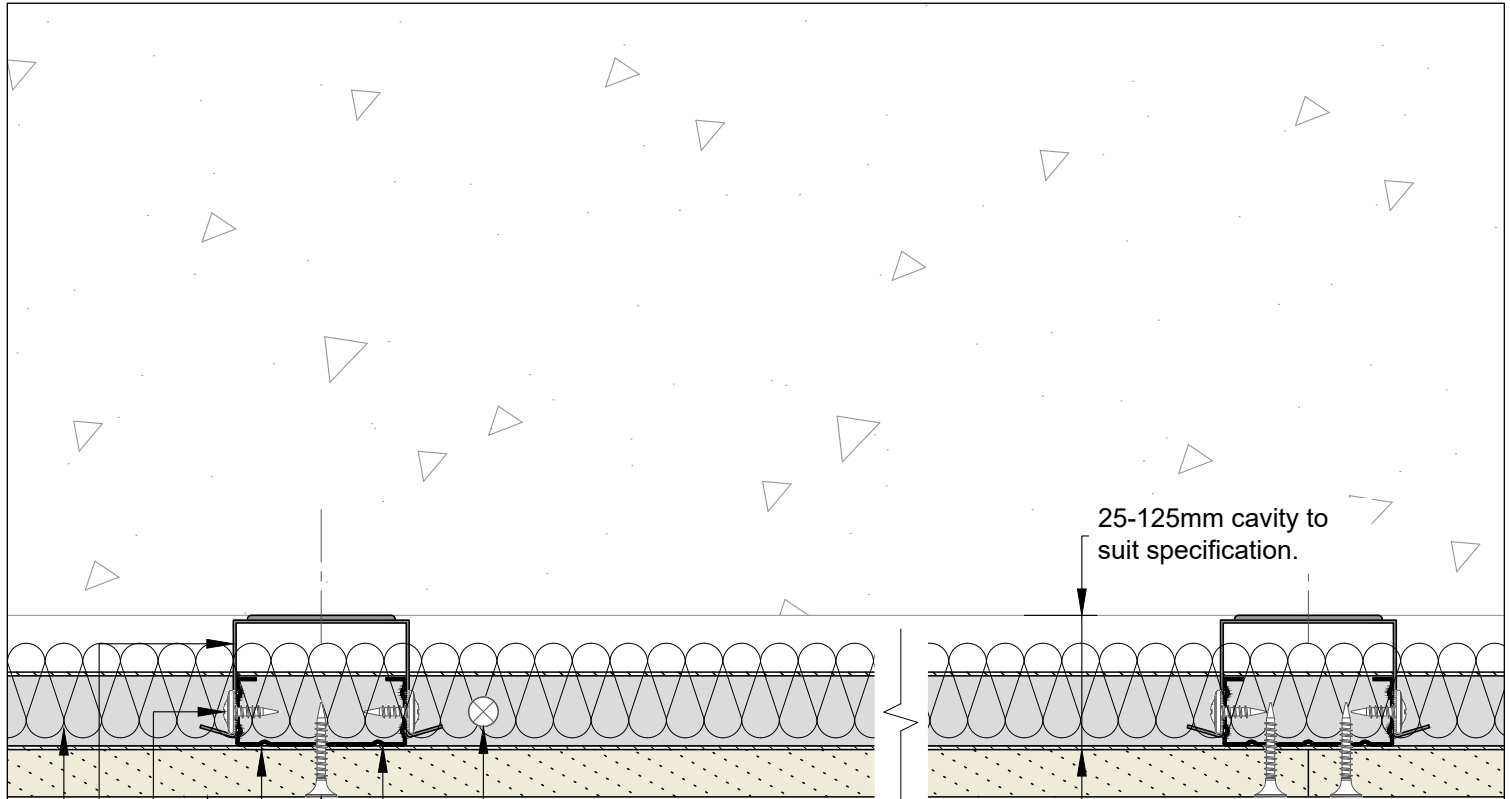


# Hadley DRYLINING

## Standard Details

Hadley SHIELD – Single Layer - Drawings





- Base/Soffit fixings suitable for substrate, at 600mm centres and within 50mm of each end.
- Hadley Liner Stud at centres to suit specification.
- Board fixings using Hadley Drywall Screws at 300mm centres.
- Hadley Liner Track.
- Plasterboard to suit specification.
- Hadley Wafer Head Drywall Screw each side to secure bracket to stud.
- Hadley Liner Brackets at 800mm vertical centres or reduced to suit specification, fixed using suitable fixings for substrate.
- Insulation to suit specification.

00	JUL21	First Issue	FM	JS	JS	System details to be read in conjunction with Hadley Group project specification pack. All applications to be built in accordance with British Standards, Building Regulations and Hadley Group tested solutions.
Rev:	Date:	Reason for Issue:	Drn:	Chk:	App:	

Project:  
**Typical System Detail**  
 See project specification for exact requirements

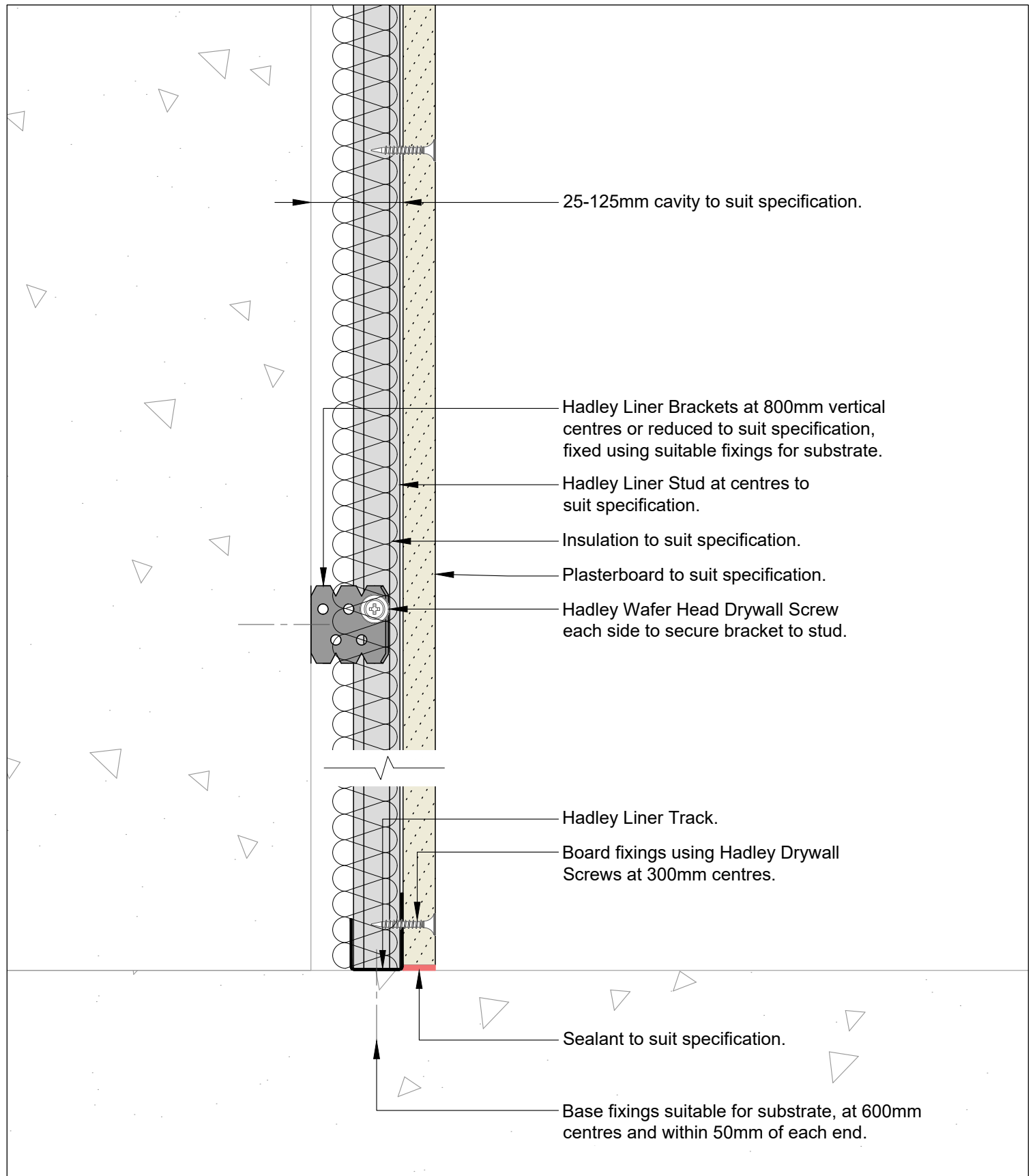
Title:  
**Hadley Shield**  
 Braced Lining Channel  
 Plan



Hadley Group, Downing Street,  
 Smethwick, West Midlands B66 2PA  
 Tel: +44 (0) 121 555 1329  
 E-mail: hct@hadleygroup.co.uk

Scale:	Date:	Drawn:	Checked:	Dwg No:	Revision:
1:2 @ A4	Jul 21	FM	JS	<b>DRY-HAD-XX-ZZ-DT-X-1101</b>	<b>00</b>

All performance data and system specifications are for systems constructed with materials & components as shown. The inclusion or substitution of any other manufacturers materials or components could invalidate test data and system performance. The information is provided in good faith and is based upon details received which are assumed to include all relevant facts. No duty of care is owed to the recipient or any other third party and Hadley Industries PLC cannot accept liability in respect of the details shown. None of the content may be distributed or copied directly without prior approval.



00	JUL21	First Issue	FM	JS	JS	System details to be read in conjunction with Hadley Group project specification pack. All applications to be built in accordance with British Standards, Building Regulations and Hadley Group tested solutions.
Rev:	Date:	Reason for Issue:	Drn:	Chk:	App:	

Project:  
**Typical System Detail**  
 See project specification for exact requirements

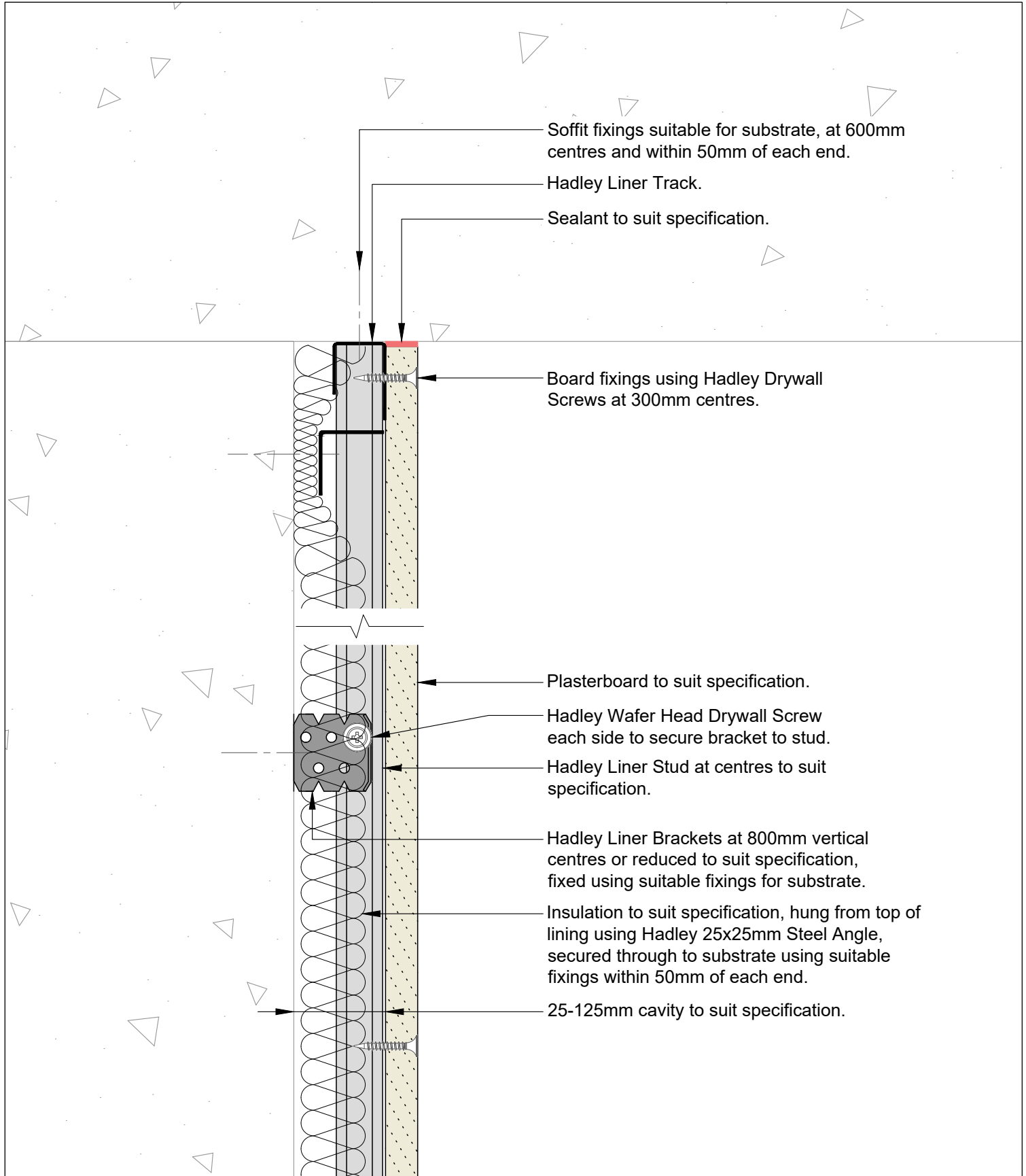
Title:  
**Hadley Shield**  
 Braced Lining Channel  
 Base



Hadley Group, Downing Street,  
 Smethwick, West Midlands B66 2PA  
 Tel: +44 (0) 121 555 1329  
 E-mail: hct@hadleygroup.co.uk

Scale:	Date:	Drawn:	Checked:	Dwg No:	Revision:
1:2 @ A4	Jul 21	FM	JS	<b>DRY-HAD-XX-ZZ-DT-X-1102</b>	<b>00</b>

All performance data and system specifications are for systems constructed with materials & components as shown. The inclusion or substitution of any other manufacturers materials or components could invalidate test data and system performance. The information is provided in good faith and is based upon details received which are assumed to include all relevant facts. No duty of care is owed to the recipient or any other third party and Hadley Industries PLC cannot accept liability in respect of the details shown. None of the content may be distributed or copied directly without prior approval.



Soffit fixings suitable for substrate, at 600mm centres and within 50mm of each end.

Hadley Liner Track.

Sealant to suit specification.

Board fixings using Hadley Drywall Screws at 300mm centres.

Plasterboard to suit specification.

Hadley Wafer Head Drywall Screw each side to secure bracket to stud.

Hadley Liner Stud at centres to suit specification.

Hadley Liner Brackets at 800mm vertical centres or reduced to suit specification, fixed using suitable fixings for substrate.

Insulation to suit specification, hung from top of lining using Hadley 25x25mm Steel Angle, secured through to substrate using suitable fixings within 50mm of each end.

25-125mm cavity to suit specification.

00	JUL21	First Issue	FM	JS	JS	System details to be read in conjunction with Hadley Group project specification pack. All applications to be built in accordance with British Standards, Building Regulations and Hadley Group tested solutions.
Rev:	Date:	Reason for Issue:	Drn:	Chk:	App:	

Project:  
**Typical System Detail**  
 See project specification for exact requirements

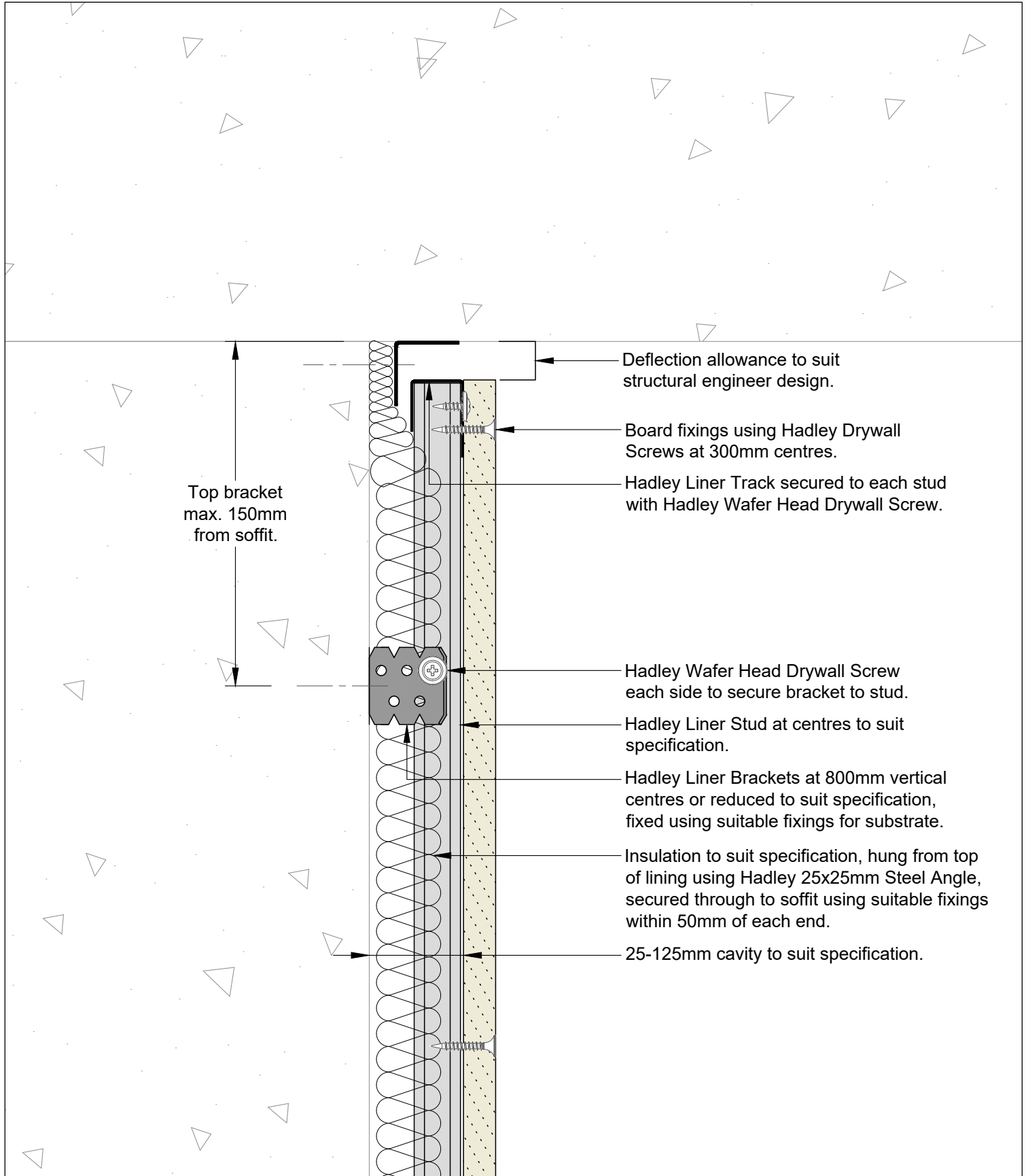
Title:  
**Hadley Shield**  
 Braced Lining Channel  
 Fixed Head



Hadley Group, Downing Street,  
 Smethwick, West Midlands B66 2PA  
 Tel: +44 (0) 121 555 1329  
 E-mail: hct@hadleygroup.co.uk

Scale:	Date:	Drawn:	Checked:	Dwg No:	Revision:
1:2 @ A4	Jul 21	FM	JS	<b>DRY-HAD-XX-ZZ-DT-X-1103</b>	<b>00</b>

All performance data and system specifications are for systems constructed with materials & components as shown. The inclusion or substitution of any other manufacturers materials or components could invalidate test data and system performance. The information is provided in good faith and is based upon details received which are assumed to include all relevant facts. No duty of care is owed to the recipient or any other third party and Hadley Industries PLC cannot accept liability in respect of the details shown. None of the content may be distributed or copied directly without prior approval.



00	JUL21	First Issue	FM	JS	JS	System details to be read in conjunction with Hadley Group project specification pack. All applications to be built in accordance with British Standards, Building Regulations and Hadley Group tested solutions.
Rev:	Date:	Reason for Issue:	Drn:	Chk:	App:	

Project:  
**Typical System Detail**  
 See project specification for exact requirements

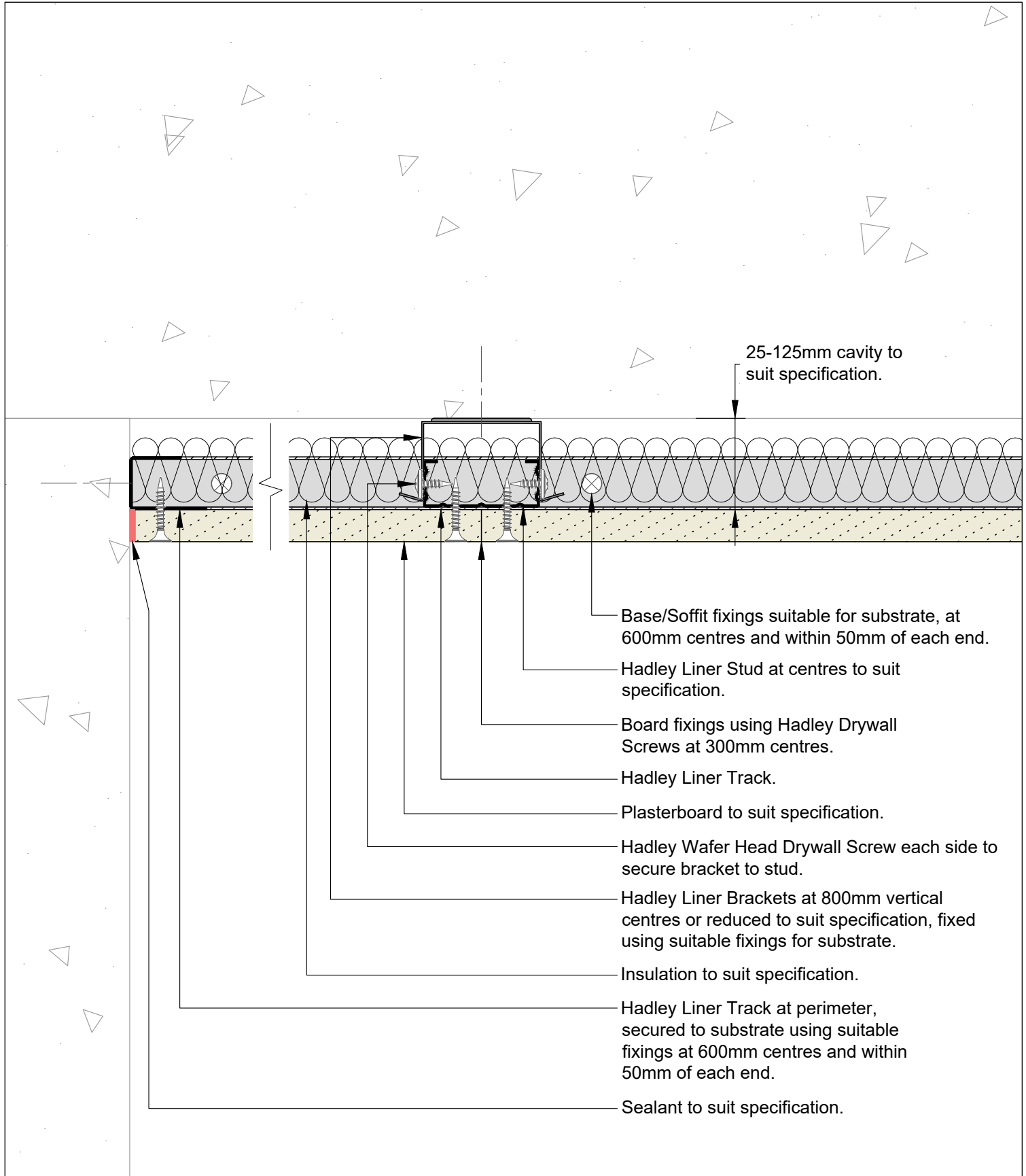
Title:  
**Hadley Shield**  
 Braced Lining Channel  
 Deflection Head



Hadley Group, Downing Street,  
 Smethwick, West Midlands B66 2PA  
 Tel: +44 (0) 121 555 1329  
 E-mail: hct@hadleygroup.co.uk

Scale:	Date:	Drawn:	Checked:	Dwg No:	Revision:
1:2 @ A4	Jul 21	FM	JS	<b>DRY-HAD-XX-ZZ-DT-X-1104</b>	<b>00</b>

All performance data and system specifications are for systems constructed with materials & components as shown. The inclusion or substitution of any other manufacturers materials or components could invalidate test data and system performance. The information is provided in good faith and is based upon details received which are assumed to include all relevant facts. No duty of care is owed to the recipient or any other third party and Hadley Industries PLC cannot accept liability in respect of the details shown. None of the content may be distributed or copied directly without prior approval.



25-125mm cavity to suit specification.

- Base/Soffit fixings suitable for substrate, at 600mm centres and within 50mm of each end.
- Hadley Liner Stud at centres to suit specification.
- Board fixings using Hadley Drywall Screws at 300mm centres.
- Hadley Liner Track.
- Plasterboard to suit specification.
- Hadley Wafer Head Drywall Screw each side to secure bracket to stud.
- Hadley Liner Brackets at 800mm vertical centres or reduced to suit specification, fixed using suitable fixings for substrate.
- Insulation to suit specification.
- Hadley Liner Track at perimeter, secured to substrate using suitable fixings at 600mm centres and within 50mm of each end.
- Sealant to suit specification.

00	JUL21	First Issue	FM	JS	JS	System details to be read in conjunction with Hadley Group project specification pack. All applications to be built in accordance with British Standards, Building Regulations and Hadley Group tested solutions.
Rev:	Date:	Reason for Issue:	Drn:	Chk:	App:	

Project:  
**Typical System Detail**  
 See project specification for exact requirements

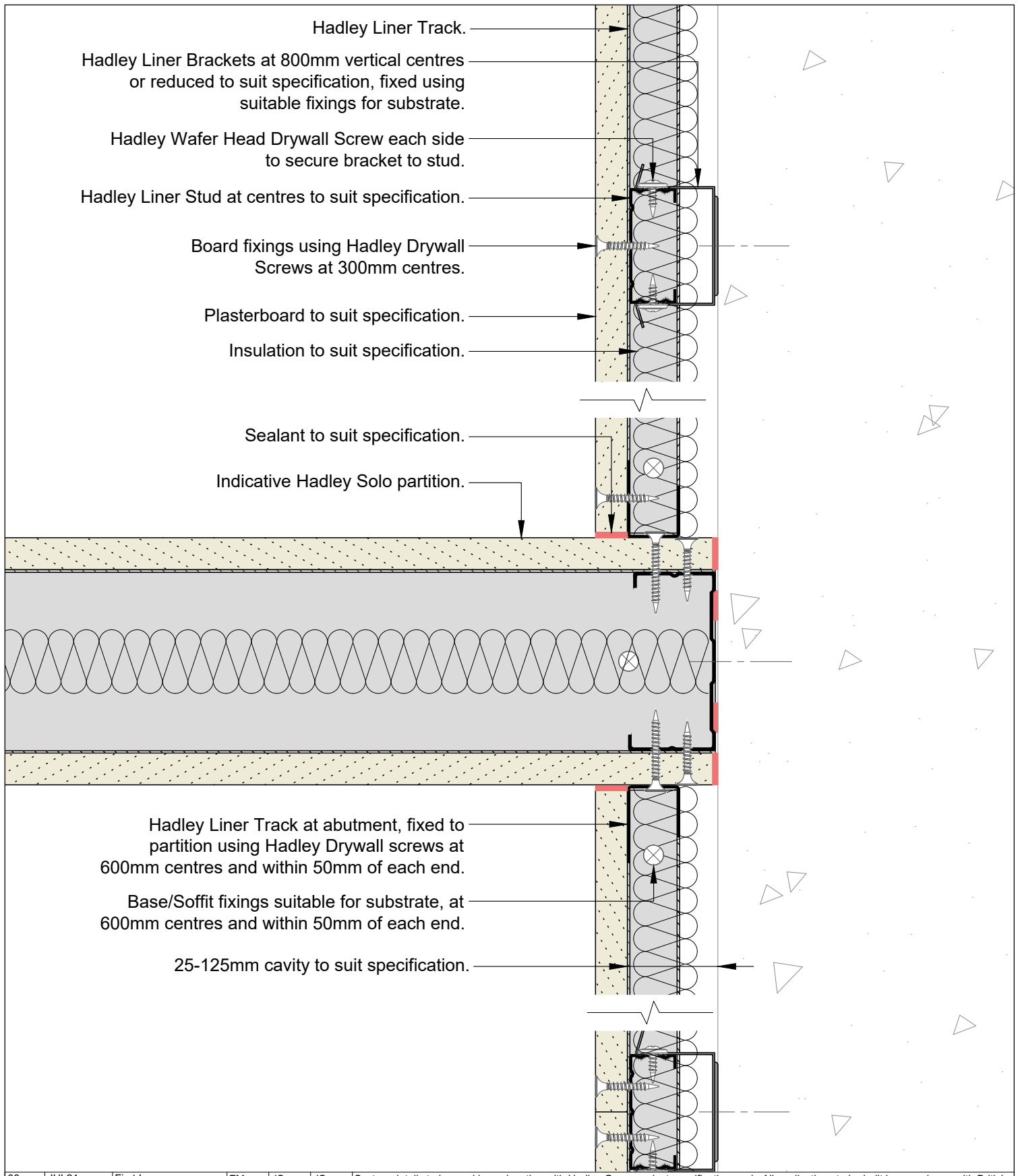
Title:  
**Hadley Shield**  
 Braced Lining Channel  
 Concrete Abutment



Hadley Group, Downing Street,  
 Smethwick, West Midlands B66 2PA  
 Tel: +44 (0) 121 555 1329  
 E-mail: hct@hadleygroup.co.uk

Scale:	Date:	Drawn:	Checked:	Dwg No:	Revision:
1:2 @ A4	Jul 21	FM	JS	<b>DRY-HAD-XX-ZZ-DT-X-1105</b>	<b>00</b>

All performance data and system specifications are for systems constructed with materials & components as shown. The inclusion or substitution of any other manufacturers materials or components could invalidate test data and system performance. The information is provided in good faith and is based upon details received which are assumed to include all relevant facts. No duty of care is owed to the recipient or any other third party and Hadley Industries PLC cannot accept liability in respect of the details shown. None of the content may be distributed or copied directly without prior approval.



00	JUL21	First Issue	FM	JS	JS	System details to be read in conjunction with Hadley Group project specification pack. All applications to be built in accordance with British Standards, Building Regulations and Hadley Group tested solutions.
Rev:	Date:	Reason for Issue:	Drn:	Chk:	App:	

Project:  
**Typical System Detail**  
 See project specification for exact requirements

Title:  
**Hadley Shield**  
 Braced Lining Channel  
 Partition Junction

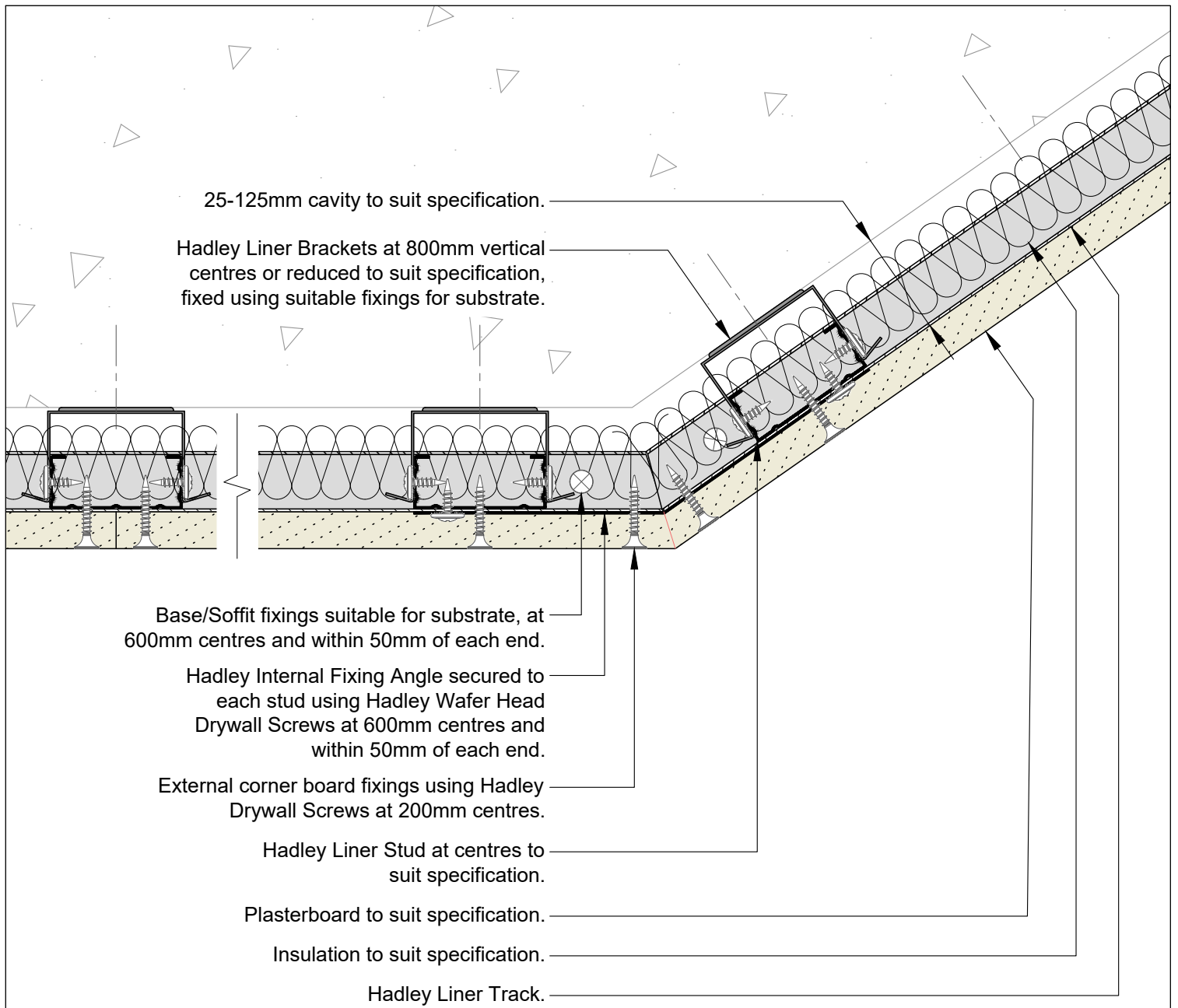


Hadley Group, Downing Street,  
 Smethwick, West Midlands B66 2PA  
 Tel: +44 (0) 121 555 1329  
 E-mail: hct@hadleygroup.co.uk

Scale: 1:2 @ A4	Date: Jul 21	Drawn: FM	Checked: JS	Dwg No: <b>DRY-HAD-XX-ZZ-DT-X-1106</b>	Revision: <b>00</b>
--------------------	-----------------	--------------	----------------	---	------------------------

All performance data and system specifications are for systems constructed with materials & components as shown. The inclusion or substitution of any other manufacturers materials or components could invalidate test data and system performance. The information is provided in good faith and is based upon details received which are assumed to include all relevant facts. No duty of care is owed to the recipient or any other third party and Hadley Industries PLC cannot accept liability in respect of the details shown. None of the content may be distributed or copied directly without prior approval.

© 2021 Hadley Industries Holdings Limited



00	JUL21	First Issue	FM	JS	JS	System details to be read in conjunction with Hadley Group project specification pack. All applications to be built in accordance with British Standards, Building Regulations and Hadley Group tested solutions.
Rev:	Date:	Reason for Issue:	Drn:	Chk:	App:	

Project:  
**Typical System Detail**  
 See project specification for exact requirements

Title:  
**Hadley Shield**  
 Braced Lining Channel  
 Splayed Corner External



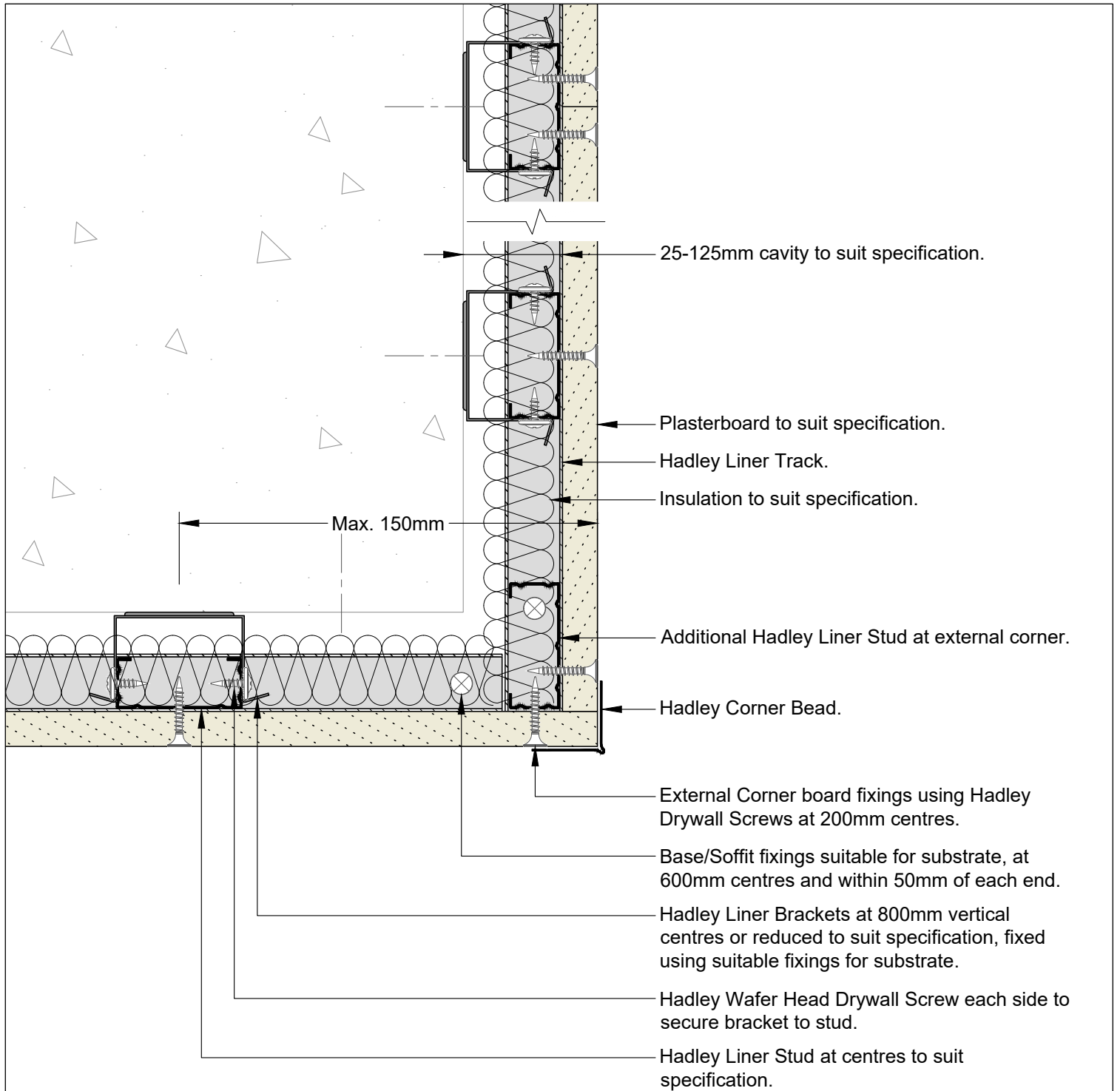
Hadley Group, Downing Street,  
 Smethwick, West Midlands B66 2PA  
 Tel: +44 (0) 121 555 1329  
 E-mail: hct@hadleygroup.co.uk

Scale:	Date:	Drawn:	Checked:	Dwg No:	Revision:
1:2 @ A4	Jul 21	FM	JS	<b>DRY-HAD-XX-ZZ-DT-X-1107</b>	<b>00</b>

All performance data and system specifications are for systems constructed with materials & components as shown. The inclusion or substitution of any other manufacturers materials or components could invalidate test data and system performance. The information is provided in good faith and is based upon details received which are assumed to include all relevant facts. No duty of care is owed to the recipient or any other third party and Hadley Industries PLC cannot accept liability in respect of the details shown. None of the content may be distributed or copied directly without prior approval.







00	JUL21	First Issue	FM	JS	JS	System details to be read in conjunction with Hadley Group project specification pack. All applications to be built in accordance with British Standards, Building Regulations and Hadley Group tested solutions.
Rev:	Date:	Reason for Issue:	Drn:	Chk:	App:	

Project:  
**Typical System Detail**  
 See project specification for exact requirements

Title:  
**Hadley Shield**  
 Braced Lining Channel  
 90° Corner External

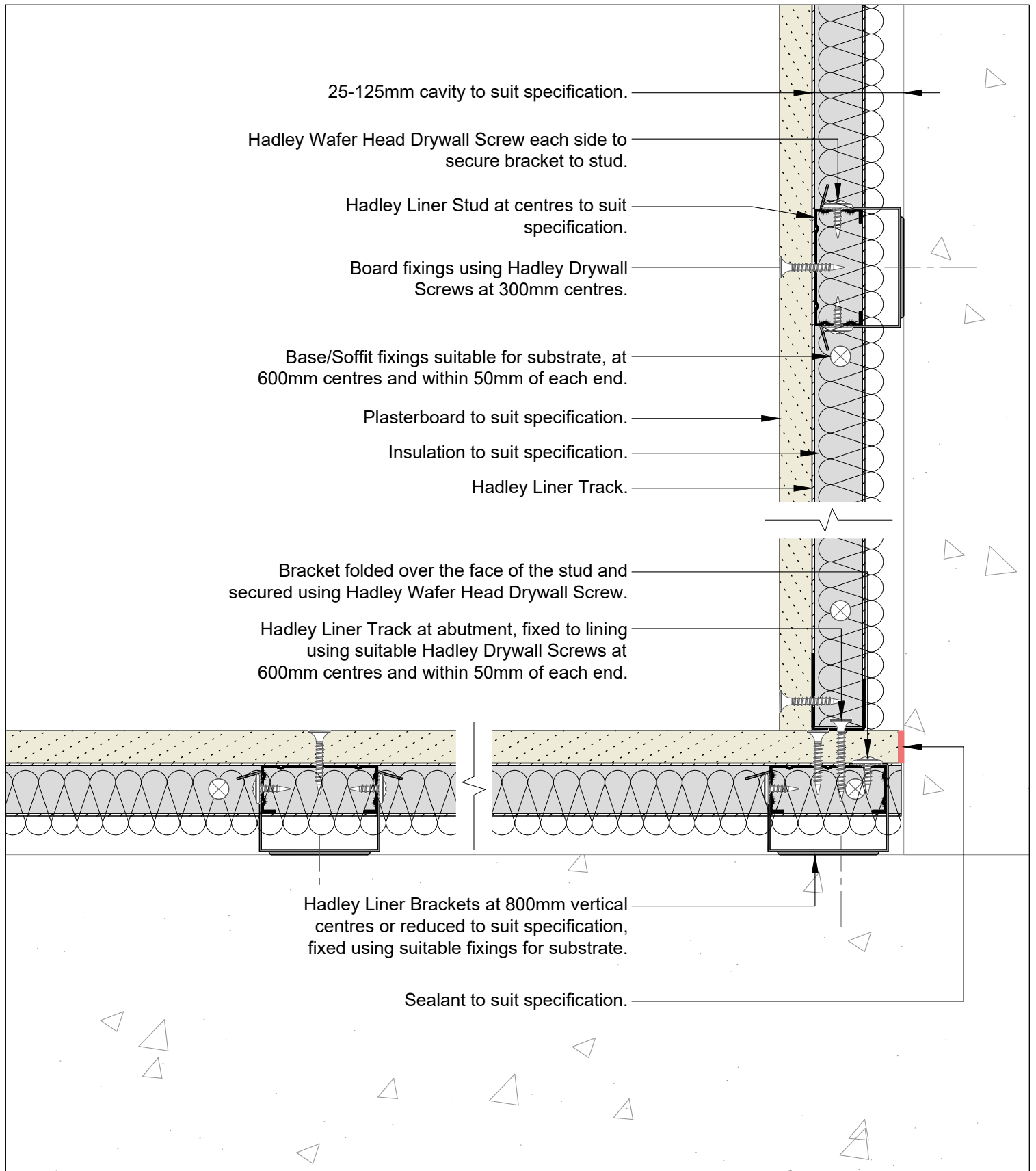


Hadley Group, Downing Street,  
 Smethwick, West Midlands B66 2PA  
 Tel: +44 (0) 121 555 1329  
 E-mail: hct@hadleygroup.co.uk

Scale:	Date:	Drawn:	Checked:	Dwg No:	Revision:
1:2 @ A4	Jul 21	FM	JS	<b>DRY-HAD-XX-ZZ-DT-X-1109</b>	<b>00</b>

All performance data and system specifications are for systems constructed with materials & components as shown. The inclusion or substitution of any other manufacturers materials or components could invalidate test data and system performance. The information is provided in good faith and is based upon details received which are assumed to include all relevant facts. No duty of care is owed to the recipient or any other third party and Hadley Industries PLC cannot accept liability in respect of the details shown. None of the content may be distributed or copied directly without prior approval.

© 2021 Hadley Industries Holdings Limited



00	JUL21	First Issue	FM	JS	JS	System details to be read in conjunction with Hadley Group project specification pack. All applications to be built in accordance with British Standards, Building Regulations and Hadley Group tested solutions.
Rev:	Date:	Reason for Issue:	Drn:	Chk:	App:	

Project:  
**Typical System Detail**  
 See project specification for exact requirements

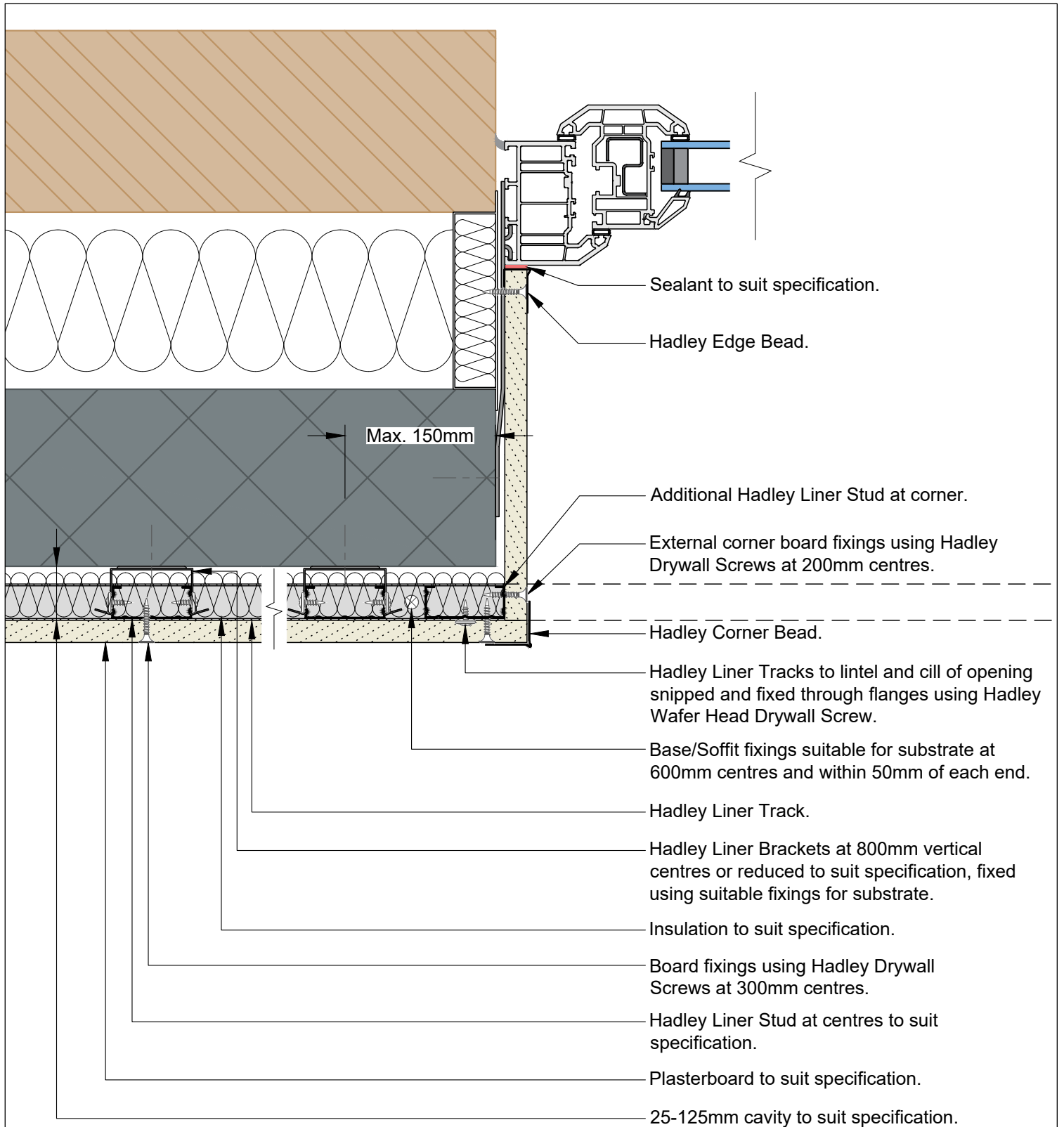
Title:  
**Hadley Shield**  
 Braced Lining Channel  
 90° Corner Internal

Scale:	Date:	Drawn:	Checked:	Dwg No:	Revision:
1:2 @ A4	Jul 21	FM	JS	<b>DRY-HAD-XX-ZZ-DT-X-1110</b>	<b>00</b>



Hadley Group, Downing Street,  
 Smethwick, West Midlands B66 2PA  
 Tel: +44 (0) 121 555 1329  
 E-mail: hct@hadleygroup.co.uk

All performance data and system specifications are for systems constructed with materials & components as shown. The inclusion or substitution of any other manufacturers materials or components could invalidate test data and system performance. The information is provided in good faith and is based upon details received which are assumed to include all relevant facts. No duty of care is owed to the recipient or any other third party and Hadley Industries PLC cannot accept liability in respect of the details shown. None of the content may be distributed or copied directly without prior approval.  
 © 2021 Hadley Industries Holdings Limited



00	JUL21	First Issue	FM	JS	JS	System details to be read in conjunction with Hadley Group project specification pack. All applications to be built in accordance with British Standards, Building Regulations and Hadley Group tested solutions.
Rev:	Date:	Reason for Issue:	Drn:	Chk:	App:	

Project:  
**Typical System Detail**  
 See project specification for exact requirements

Title:  
**Hadley Shield**  
 Braced Lining Channel  
 Window/Door Reveal Detail

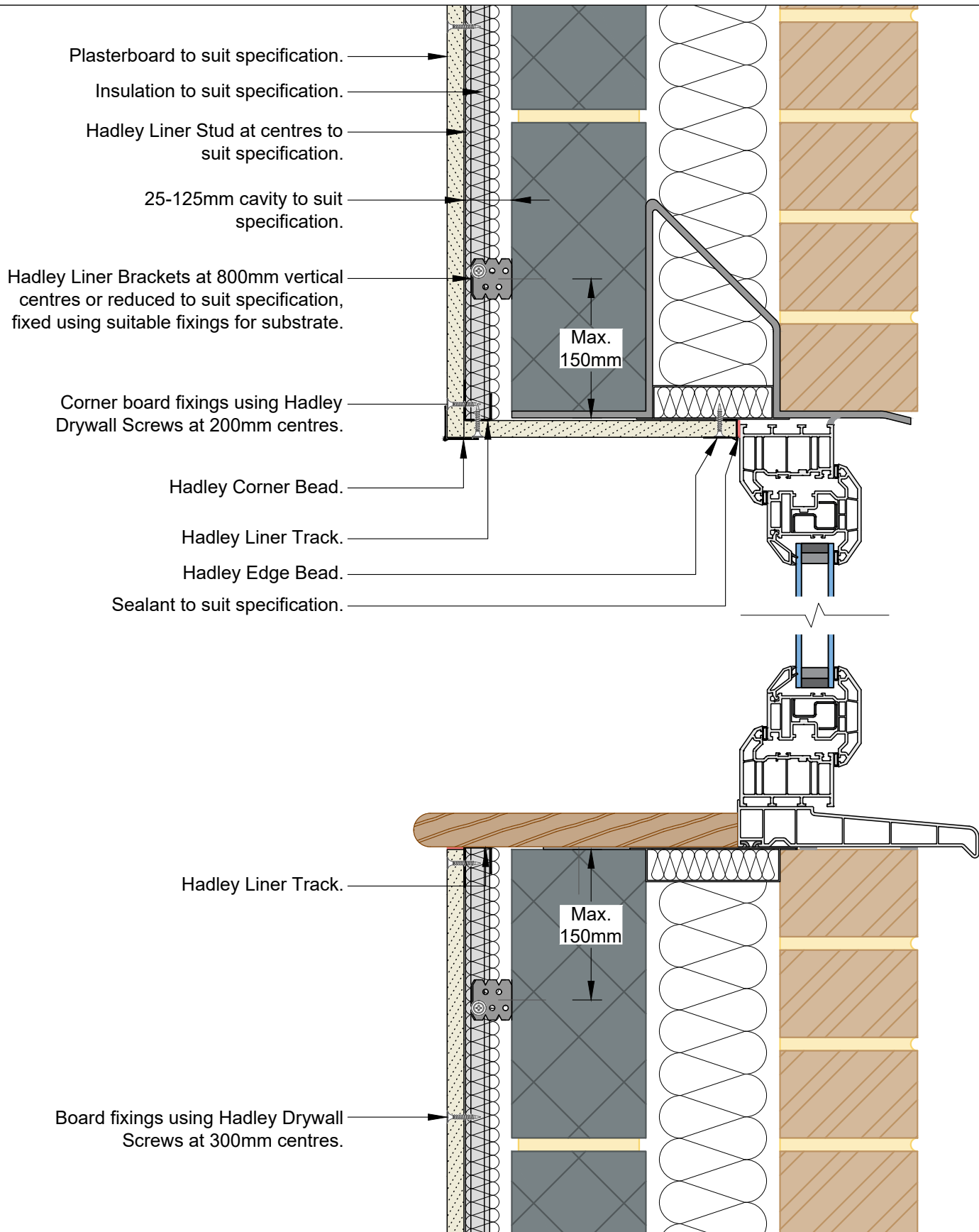


Hadley Group, Downing Street,  
 Smethwick, West Midlands B66 2PA  
 Tel: +44 (0) 121 555 1329  
 E-mail: hct@hadleygroup.co.uk

Scale:	Date:	Drawn:	Checked:	Dwg No:	Revision:
1:3 @ A4	Jul 21	FM	JS	<b>DRY-HAD-XX-ZZ-DT-X-1111</b>	<b>00</b>

All performance data and system specifications are for systems constructed with materials & components as shown. The inclusion or substitution of any other manufacturers materials or components could invalidate test data and system performance. The information is provided in good faith and is based upon details received which are assumed to include all relevant facts. No duty of care is owed to the recipient or any other third party and Hadley Industries PLC cannot accept liability in respect of the details shown. None of the content may be distributed or copied directly without prior approval.

© 2021 Hadley Industries Holdings Limited



00	JUL21	First Issue	FM	JS	JS	System details to be read in conjunction with Hadley Group project specification pack. All applications to be built in accordance with British Standards, Building Regulations and Hadley Group tested solutions.
Rev:	Date:	Reason for Issue:	Drn:	Chk:	App:	

Project:

Typical System Detail  
See project specification for exact requirements

Title:  
**Hadley Shield**  
Braced Lining Channel  
Window/Door Cill/Head Detail



Hadley Group, Downing Street,  
Smethwick, West Midlands B66 2PA  
Tel: +44 (0) 121 555 1329  
E-mail: hct@hadleygroup.co.uk

Scale:	Date:	Drawn:	Checked:	Dwg No:	Revision:
1:4 @ A4	Jul 21	FM	JS	<b>DRY-HAD-XX-ZZ-DT-X-1112</b>	<b>00</b>

All performance data and system specifications are for systems constructed with materials & components as shown. The inclusion or substitution of any other manufacturers materials or components could invalidate test data and system performance. The information is provided in good faith and is based upon details received which are assumed to include all relevant facts. No duty of care is owed to the recipient or any other third party and Hadley Industries PLC cannot accept liability in respect of the details shown. None of the content may be distributed or copied directly without prior approval.