

Hadley DRYLINING

PARTITION & CEILING METAL

O&M Manual

2024



FULLY WARRANTED SYSTEM

HadleySPEC WARRANTED SYSTEM

Hadley Drylining Product List

Hadley Drylining Product List

Technical Product Datasheets

Technical Product Datasheet – 50mm C Stud
Technical Product Datasheet – 60mm C Stud
Technical Product Datasheet – 70mm C Stud
Technical Product Datasheet – 92mm C Stud
Technical Product Datasheet – 146mm C Stud
Technical Product Datasheet – 50mm I Stud
Technical Product Datasheet – 60mm I Stud
Technical Product Datasheet – 70mm I Stud
Technical Product Datasheet – 92mm I Stud
Technical Product Datasheet – 146mm I Stud
Technical Product Datasheet – 70mm Acoustic C Stud
Technical Product Datasheet – 92mm Acoustic C Stud
Technical Product Datasheet – 52mm Track
Technical Product Datasheet – 62mm Track
Technical Product Datasheet – 72mm Track
Technical Product Datasheet – 94mm Track
Technical Product Datasheet – 148mm Track
Technical Product Datasheet – 52mm Deep Track
Technical Product Datasheet – 62mm Deep Track
Technical Product Datasheet – 72mm Deep Track
Technical Product Datasheet – 94mm Deep Track
Technical Product Datasheet – 148mm Deep Track
Technical Product Datasheet – 72mm Extra Deep Track
Technical Product Datasheet – 94mm Extra Deep Track
Technical Product Datasheet – 148mm Extra Deep Track
Technical Product Datasheet – Liner Stud
Technical Product Datasheet – Liner Track
Technical Product Datasheet – Liner Connector
Technical Product Datasheet – Angle (19mm x 19mm)
Technical Product Datasheet – Angle (25mm x 25mm)
Technical Product Datasheet – Angle (25mm x 50mm)
Technical Product Datasheet – Angle (50mm x 50mm)
Technical Product Datasheet – Ceiling Furring MF5
Technical Product Datasheet – Perimeter Channel MF6A
Technical Product Datasheet – Primary Channel MF7
Technical Product Datasheet – Resilient Bar
Technical Product Datasheet – Flat Strap
Technical Product Datasheet – Shaft core Angle Bracket
Technical Product Datasheet – Short Leg Liner Bracket
Technical Product Datasheet – Long Leg Liner Bracket
Technical Product Datasheet – Metal Furring Clip
Technical Product Datasheet – Service Support Plate
Technical Product Datasheet – Staggered Stud Clip SC1
Technical Product Datasheet – Staggered Stud Clip SC2

Material Safety Datasheets

Hadley Drylining - Material Safety Datasheet (MSDS)

Declaration of Performance (DoP)

Hadley Drylining – Declaration of Performance (DoP)

Warranty

HadleySPEC- Warranty

Hadley DRYLINING

PARTITION & CEILING METAL

Product List

2024



FULLY WARRANTED SYSTEM

HadleySPEC WARRANTED SYSTEM

Hadley C Stud

Item Code	Size	Stock Lengths	Pack Quantities
5297	50mm	2.4m / 2.7m / 3.0m / 3.6m / 4.2m	10/50/300
5373	60mm	3.0m / 3.6m	10/50/300
5299	70mm	2.4m / 2.7m / 3.0m / 3.6m / 4.2m	10/50/300
5301	92mm	3.0m / 3.6m / 4.2m	10/50/300
5302	146mm	3.6m / 4.2m / 5m / 6m	10/100



Hadley I Stud

Item Code	Size	Stock Lengths	Pack Quantities
5954	50mm	2.7m / 3.0m / 3.6m	5/100
5954A	60mm	3.0m / 3.6m	5/100
5954B	70mm	3.0m / 4.2m	5/100
5954C	92mm	3.0m / 3.6m / 4.2m / 5m / 6m	5/50
5954D	146mm	5m / 6m	5/50



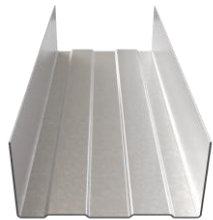
Hadley Acoustic C Stud

Item Code	Size	Stock Lengths	Pack Quantities
6262	70mm	3.0m / 4.2m	10/50/200
6262A	92mm	3.0m / 4.2m	10/50/200



Hadley Track (U Channel)

Item Code	Size	Stock Lengths	Pack Quantities
5305	52mm	3.0m	10/50/200/1000
581B	62mm	3.0m	10/100/300
5307	72mm	3.0m	10/50/300/600
5309	94mm	3.0m	10/50/300
5310B	148mm	3.0m	10/80/160



Hadley Deep Track (Deep U Channel)

Item Code	Size	Stock Lengths	Pack Quantities
5305B	52mm	3.0m	10/50/150/600
581	62mm	3.0m	10/100
669	72mm	3.0m	10/50/450
850	94mm	3.0m	10/50/200
5310A	148mm	3.0m	10/100



Hadley Extra Deep Track (Extra Deep U Channel)

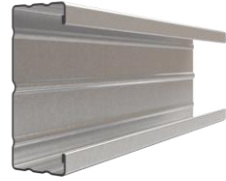
Item Code	Size	Stock Lengths	Pack Quantities
782	72mm	3.0m	10/100
783	94mm	3.0m	10/100
784	148mm	3.0m	10/100



HadleySPEC WARRANTED SYSTEM

Hadley Liner Stud

Item Code	Size	Stock Lengths	Pack Quantities
2206A	45 x 18mm	2.4m / 2.7m / 3m / 3.6m	10/500



Hadley Liner Track

Item Code	Size	Stock Lengths	Pack Quantities
5217	30x20x20	3m / 3.6m	10/100/500



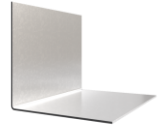
Hadley Liner Connector

Item Code	Size	Stock Lengths	Pack Quantities
5262			Box of 100



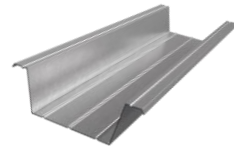
Hadley Angle

Item Code	Size	Stock Lengths	Pack Quantities
1900	25 x 25mm	3m / 3.6m	20/500
2012	50 x 25mm	3m / 3.6m	10/200
1901	50 x 50mm	3m / 3.6m	10/200



Hadley MF Ceiling Furring MF5

Item Code	Size	Stock Lengths	Pack Quantities
988		3.6m	25/100/200



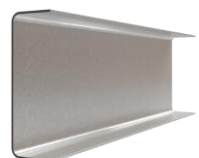
Hadley MF Perimeter Channel MF6A

Item Code	Size	Stock Lengths	Pack Quantities
989		3.6m	10/200/400



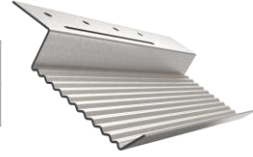
Hadley MF Primary Channel MF7

Item Code	Size	Stock Lengths	Pack Quantities
311B		3.6m	10/200



Hadley Resilient Bar

Item Code	Size	Stock Lengths	Pack Quantities
2593B		3.0m	20/100/500



Hadley Flat Strap

Item Code	Size	Stock Lengths	Pack Quantities
5179	70mm	2.4m	20/500



Hadley Shaftcore Angle Bracket

Item Code	Size	Stock Lengths	Pack Quantities
6294	1.0mm		Box of 100



Hadley Short Leg Liner Bracket

Item Code	Size	Stock Lengths	Pack Quantities
5260	195mm		Box of 100



Hadley Long Leg Liner Bracket

Item Code	Size	Stock Lengths	Pack Quantities
5261	295mm		Box of 100



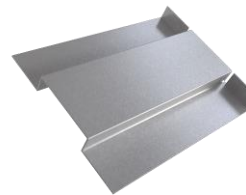
Hadley Metal Furring Clip

Item Code	Size	Stock Lengths	Pack Quantities
5069			Box of 200



Hadley Service Support Plate (12mm)

Item Code	Size	Stock Lengths	Pack Quantities
6672	12mm		Box of 100



Hadley Staggered Stud Clips

Item Code	Size	Stock Lengths	Pack Quantities
6763	SC1		Box of 100
5288	SC2		Box of 100



Item Code : 5297

HADLEY 50mm C STUDS

Hadley C Studs are cold-rolled steel studs used as part of a Hadley System to create non-loadbearing internal partitions.

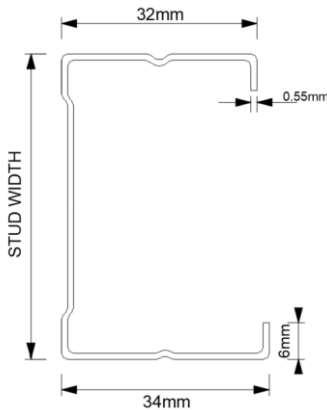
Manufactured in accordance with EN 14195:2005



Scan QR code for Hadley System **Golden Thread Documents: Technical Datasheet, Material Safety Datasheet, Declaration of Performance (DoP), O&M Manual and more...**



Product Information



Width	50mm
Flange	32mm/34mm
Gauge	0.55mm
Lengths	2.4m / 2.7m / 3.0m / 3.6m / 4.2m
Pack Quantities	10 / 50 / 300

REACTION TO FIRE:
A1

YIELD STRENGTH:
210 (N/mm²)

SERVICE CUT OUTS:
80mm x 30mm @ 600mm Centres

SYSTEM PERFORMANCE INFORMATION:
To be installed as a part of a complete Hadley system to achieve both Fire and Acoustic performance. To understand more about our fully warranted and tested solutions, please contact our Hadley Construction Technology Team.

STORAGE & HANDLING:

When installing Hadley components please ensure full PPE is used and the site is practicing a safe working environment alongside industry standards.

DISPOSAL:

Hadley Metal is fully recyclable.

SYSTEMS USED:

- HadleySOLO – Single Stud System
- HadleyDUO – Twin Frame I Stud System (*used only at abutments)
- HadleyBRACE – Braced Twin Frame System
- HadleyHUSH – Single Stud System using Resilient Bars
- HadleySTAGGER – Staggered Stud System (*used only at abutments)
- HadleyLINE- Independent I Stud Lining System (*used only at abutments)

Item Code : 5373

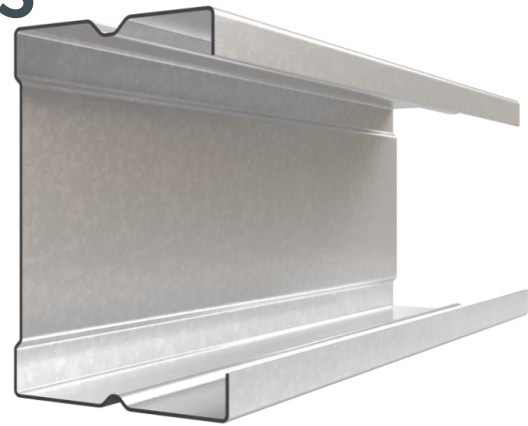
HADLEY 60mm C STUDS

Hadley C Studs are cold-rolled steel studs used as part of a Hadley System to create non-loadbearing internal partitions.

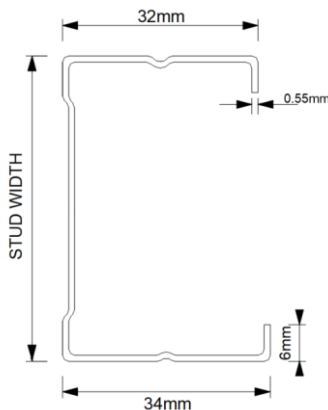
Manufactured in accordance with EN 14195:2005



Scan QR code for Hadley System **Golden Thread Documents: Technical Datasheet, Material Safety Datasheet, Declaration of Performance (DoP), O&M Manual and more...**



Product Information



Width	60mm
Flange	32mm/34mm
Gauge	0.55mm
Lengths	3.0m / 3.6m
Pack Quantities	10 / 50 / 300

REACTION TO FIRE:
A1

YIELD STRENGTH:
210 (N/mm²)

SERVICE CUT OUTS:
80mm x 30mm @ 600mm Centres

SYSTEM PERFORMANCE INFORMATION:
To be installed as a part of a complete Hadley system to achieve both Fire and Acoustic performance. To understand more about our fully warranted and tested solutions, please contact our Hadley Technical Support Team.

STORAGE & HANDLING:

When installing Hadley components please ensure full PPE is used and the site is practicing a safe working environment alongside industry standards.

DISPOSAL:

Hadley Metal is fully recyclable.

SYSTEMS USED:

- HadleySOLO – Single Stud System
- HadleyDUO – Twin Frame I Stud System (*used only at abutments)
- HadleyBRACE – Braced Twin Frame System
- HadleyHUSH – Single Stud System using Resilient Bars
- HadleySTAGGER – Staggered Stud System (*used only at abutments)
- HadleyLINE- Independent I Stud Lining System (*used only at abutments)

Item Code : 5299

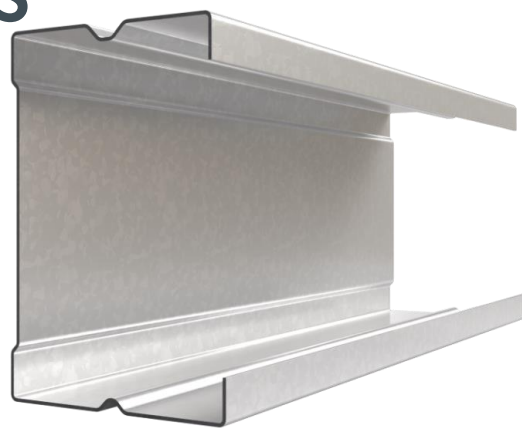
HADLEY 70mm C STUDS

Hadley C Studs are cold-rolled steel studs used as part of a Hadley System to create non-loadbearing internal partitions.

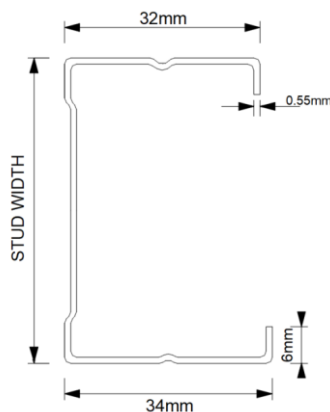
Manufactured in accordance with EN 14195:2005



Scan QR code for Hadley System **Golden Thread Documents: Technical Datasheet, Material Safety Datasheet, Declaration of Performance (DoP), O&M Manual and more...**



Product Information



Width	70mm
Flange	32mm/34mm
Gauge	0.55mm
Lengths	2.4m / 2.7m / 3.0m / 3.6m / 4.2m
Pack Quantities	10 / 50 / 300

REACTION TO FIRE:
A1

YIELD STRENGTH:
210 (N/mm²)

SERVICE CUT OUTS:
80mm x 30mm @ 600mm Centres

SYSTEM PERFORMANCE INFORMATION:
To be installed as a part of a complete Hadley system to achieve both Fire and Acoustic performance. To understand more about our fully warranted and tested solutions, please contact our Hadley Technical Support Team.

STORAGE & HANDLING:

When installing Hadley components please ensure full PPE is used and the site is practicing a safe working environment alongside industry standards.

DISPOSAL:

Hadley Metal is fully recyclable.

SYSTEMS USED:

HadleySOLO – Single Stud System
 HadleyDUO – Twin Frame I Stud System (*used only at abutments)
 HadleyBRACE – Braced Twin Frame System
 HadleyHUSH – Single Stud System using Resilient Bars
 HadleySTAGGER – Staggered Stud System (*used only at abutments)
 HadleyLINE- Independent I Stud Lining System (*used only at abutments)

Item Code : 5301

HADLEY 92mm C STUDS

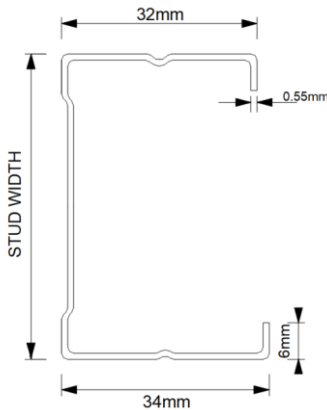
Hadley C Studs are cold-rolled steel studs used as part of a Hadley System to create non-loadbearing internal partitions.

Manufactured in accordance with EN 14195:2005



Scan QR code for Hadley System **Golden Thread Documents: Technical Datasheet, Material Safety Datasheet, Declaration of Performance (DoP), O&M Manual and more...**

Product Information



Width	92mm
Flange	32mm/34mm
Gauge	0.55mm
Lengths	3.0m / 3.6m / 4.2m
Pack Quantities	10 / 50 / 300

REACTION TO FIRE:
A1

YIELD STRENGTH:
210 (N/mm²)

SERVICE CUT OUTS:
80mm x 30mm @ 600mm Centres

SYSTEM PERFORMANCE INFORMATION:
To be installed as a part of a complete Hadley system to achieve both Fire and Acoustic performance. To understand more about our fully warranted and tested solutions, please contact our Hadley Technical Support Team.

STORAGE & HANDLING:

When installing Hadley components please ensure full PPE is used and the site is practicing a safe working environment alongside industry standards.

DISPOSAL:

Hadley Metal is fully recyclable.

SYSTEMS USED:

- HadleySOLO – Single Stud System
- HadleyDUO – Twin Frame I Stud System (*used only at abutments)
- HadleyBRACE – Braced Twin Frame System
- HadleyHUSH – Single Stud System using Resilient Bars
- HadleySTAGGER – Staggered Stud System (*used only at abutments)
- HadleyLINE- Independent I Stud Lining System (*used only at abutments)

Item Code : 5302

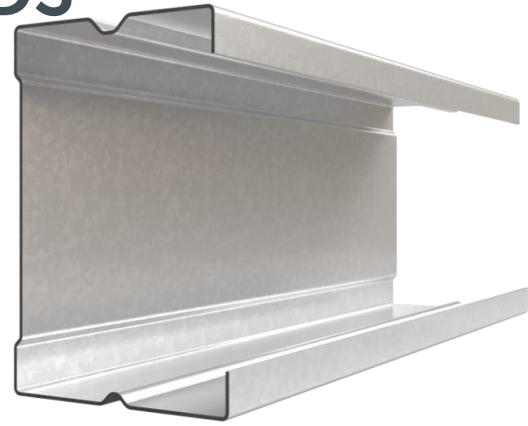
HADLEY 146mm C STUDS

Hadley C Studs are cold-rolled steel studs used as part of a Hadley System to create non-loadbearing internal partitions.

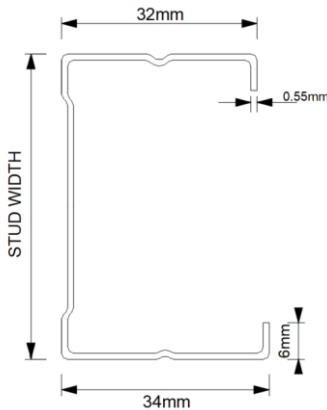
Manufactured in accordance with EN 14195:2005



Scan QR code for Hadley System **Golden Thread Documents: Technical Datasheet, Material Safety Datasheet, Declaration of Performance (DoP), O&M Manual and more...**



Product Information



Width	146mm
Flange	32mm/34mm
Gauge	0.55mm
Lengths	3.6m / 4.2m / 5m / 6m
Pack Quantities	10 / 100

REACTION TO FIRE:
A1

YIELD STRENGTH:
210 (N/mm²)

SERVICE CUT OUTS:
80mm x 30mm @ 600mm Centres

SYSTEM PERFORMANCE INFORMATION:
To be installed as a part of a complete Hadley system to achieve both Fire and Acoustic performance. To understand more about our fully warranted and tested solutions, please contact our Hadley Technical Support Team.

STORAGE & HANDLING:

When installing Hadley components please ensure full PPE is used and the site is practicing a safe working environment alongside industry standards.

DISPOSAL:

Hadley Metal is fully recyclable.

SYSTEMS USED:

- HadleySOLO – Single Stud System
- HadleyDUO – Twin Frame I Stud System (*used only at abutments)
- HadleyBRACE – Braced Twin Frame System
- HadleyHUSH – Single Stud System using Resilient Bars
- HadleySTAGGER – Staggered Stud System (*used only at abutments)
- HadleyLINE- Independent I Stud Lining System (*used only at abutments)

Item Code : 5954

HADLEY 50mm I STUDS

Hadley I Studs are cold-rolled steel studs used as part of a Hadley System to create non-loadbearing internal partitions.

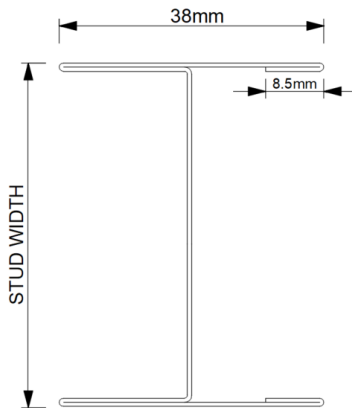
Manufactured in accordance with EN 14195:2005



Scan QR code for Hadley System **Golden Thread Documents: Technical Datasheet, Material Safety Datasheet, Declaration of Performance (DoP), O&M Manual and more...**



Product Information



Width	50mm
Flange	38mm
Gauge	0.60mm
Lengths	2.7m / 3.0m / 3.6m
Pack Quantities	5 / 100

REACTION TO FIRE:
A1

YIELD STRENGTH:
210 (N/mm²)

SERVICE CUT OUTS:
50mm x 38mm @ 600mm Centres

SYSTEM PERFORMANCE INFORMATION:
To be installed as a part of a complete Hadley system to achieve both Fire and Acoustic performance. To understand more about our fully warranted and tested solutions, please contact our Hadley Technical Support Team.

STORAGE & HANDLING:

When installing Hadley components please ensure full PPE is used and the site is practicing a safe working environment alongside industry standards.

DISPOSAL:

Hadley Metal is fully recyclable.

SYSTEMS USED:

- HadleySOLO – Single Stud System
- HadleyDUO – Twin Frame I Stud System
- HadleySHAFT – Shaftwall System
- HadleyLINE – I Stud Lining System
- HadleySTAGGER – Staggered Stud System

Item Code : 5954A

HADLEY 60mm I STUDS

Hadley I Studs are cold-rolled steel studs used as part of a Hadley System to create non-loadbearing internal partitions.

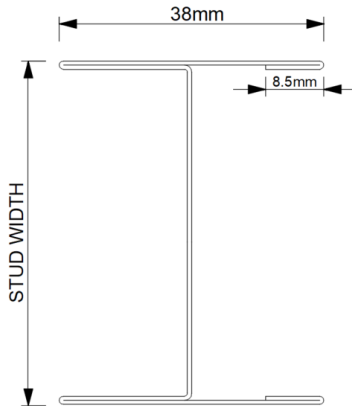
Manufactured in accordance with EN 14195:2005



Scan QR code for Hadley System **Golden Thread Documents: Technical Datasheet, Material Safety Datasheet, Declaration of Performance (DoP), O&M Manual and more...**



Product Information



Width	60mm
Flange	38mm
Gauge	0.60mm
Lengths	3.0m / 3.6m
Pack Quantities	5 / 100

REACTION TO FIRE:
A1

YIELD STRENGTH:
210 (N/mm²)

SERVICE CUT OUTS:
50mm x 38mm @ 600mm Centres

SYSTEM PERFORMANCE INFORMATION:
To be installed as a part of a complete Hadley system to achieve both Fire and Acoustic performance. To understand more about our fully warranted and tested solutions, please contact our Hadley Technical Support Team.

STORAGE & HANDLING:

When installing Hadley components please ensure full PPE is used and the site is practicing a safe working environment alongside industry standards.

DISPOSAL:

Hadley Metal is fully recyclable.

SYSTEMS USED:

- HadleySOLO – Single Stud System
- HadleyDUO – Twin Frame I Stud System
- HadleySHAFT – Shaftwall System
- HadleyLINE – I Stud Lining System
- HadleySTAGGER – Staggered Stud System

Item Code : 5954B

HADLEY 70mm I STUDS

Hadley I Studs are cold-rolled steel studs used as part of a Hadley System to create non-loadbearing internal partitions.

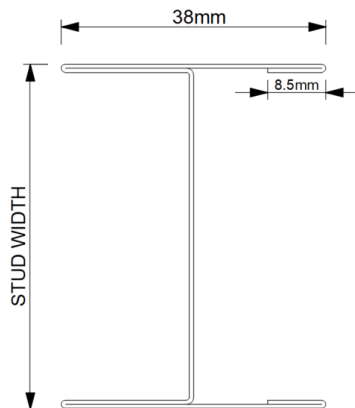
Manufactured in accordance with EN 14195:2005



Scan QR code for Hadley System **Golden Thread Documents: Technical Datasheet, Material Safety Datasheet, Declaration of Performance (DoP), O&M Manual and more...**



Product Information



Width	70mm
Flange	38mm
Gauge	0.7mm
Lengths	3.0m / 4.2m
Pack Quantities	5 / 100

REACTION TO FIRE:
A1

YIELD STRENGTH:
210 (N/mm²)

SERVICE CUT OUTS:
50mm x 38mm @ 600mm Centres

SYSTEM PERFORMANCE INFORMATION:
To be installed as a part of a complete Hadley system to achieve both Fire and Acoustic performance. To understand more about our fully warranted and tested solutions, please contact our Hadley Technical Support Team.

STORAGE & HANDLING:

When installing Hadley components please ensure full PPE is used and the site is practicing a safe working environment alongside industry standards.

DISPOSAL:

Hadley Metal is fully recyclable.

SYSTEMS USED:

HadleySOLO – Single Stud System
 HadleyDUO – Twin Frame I Stud System
 HadleySHAFT – Shaftwall System
 HadleyLINE – I Stud Lining System
 HadleySTAGGER – Staggered Stud System

Item Code : 5954C

HADLEY 92mm I STUDS

Hadley I Studs are cold-rolled steel studs used as part of a Hadley System to create non-loadbearing internal partitions.

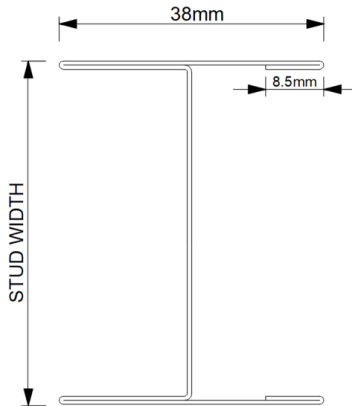
Manufactured in accordance with EN 14195:2005



Scan QR code for Hadley System **Golden Thread Documents: Technical Datasheet, Material Safety Datasheet, Declaration of Performance (DoP), O&M Manual and more...**



Product Information



Width	92mm
Flange	38mm
Gauge	0.60mm
Lengths	3.0m / 3.6m / 4.2m / 5m / 6m
Pack Quantities	5 / 50

REACTION TO FIRE:
A1

YIELD STRENGTH:
210 (N/mm²)

SERVICE CUT OUTS:
50mm x 38mm @ 600mm Centres

SYSTEM PERFORMANCE INFORMATION:
To be installed as a part of a complete Hadley system to achieve both Fire and Acoustic performance. To understand more about our fully warranted and tested solutions, please contact our Hadley Technical Support Team.

STORAGE & HANDLING:

When installing Hadley components please ensure full PPE is used and the site is practicing a safe working environment alongside industry standards.

DISPOSAL:

Hadley Metal is fully recyclable.

SYSTEMS USED:

- HadleySOLO – Single Stud System
- HadleyDUO – Twin Frame I Stud System
- HadleySHAFT – Shaftwall System
- HadleyLINE – I Stud Lining System
- HadleySTAGGER – Staggered Stud System

Item Code : 5954D

HADLEY 146mm I STUDS

Hadley I Studs are cold-rolled steel studs used as part of a Hadley System to create non-loadbearing internal partitions.

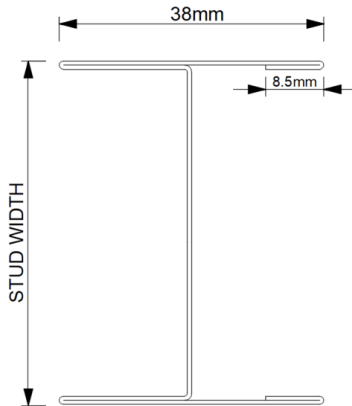
Manufactured in accordance with EN 14195:2005



Scan QR code for Hadley System **Golden Thread Documents: Technical Datasheet, Material Safety Datasheet, Declaration of Performance (DoP), O&M Manual and more...**



Product Information



Width	146mm
Flange	38mm
Gauge	0.60mm
Lengths	5m / 6m
Pack Quantities	5 / 50

REACTION TO FIRE:
A1

YIELD STRENGTH:
210 (N/mm²)

SERVICE CUT OUTS:
50mm x 38mm @ 600mm Centres

SYSTEM PERFORMANCE INFORMATION:
To be installed as a part of a complete Hadley system to achieve both Fire and Acoustic performance. To understand more about our fully warranted and tested solutions, please contact our Hadley Technical Support Team.

STORAGE & HANDLING:

When installing Hadley components please ensure full PPE is used and the site is practicing a safe working environment alongside industry standards.

DISPOSAL:

Hadley Metal is fully recyclable.

SYSTEMS USED:

- HadleySOLO – Single Stud System
- HadleyDUO – Twin Frame I Stud System
- HadleySHAFT – Shaftwall System
- HadleyLINE – I Stud Lining System
- HadleySTAGGER – Staggered Stud System

Item Code : 6262

HADLEY 70mm ACOUSTIC C STUDS

Hadley Acoustic C StudS are cold-rolled steel studs used as part of a Hadley System to create non-loadbearing internal partitions.

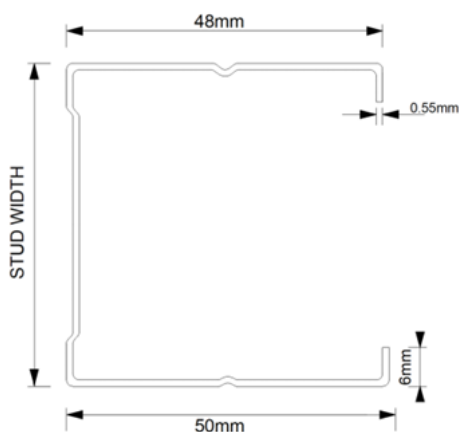
Manufactured in accordance with EN 14195:2005



Scan QR code for Hadley System **Golden Thread** Documents: Technical Datasheet, Material Safety Datasheet, Declaration of Performance (DoP), O&M Manual and more...



Product Information



Width	70mm
Flange	50mm/48mm
Gauge	0.55mm
Lengths	3.0m / 4.2m
Pack Quantities	10 / 50 / 200

REACTION TO FIRE:
A1

YIELD STRENGTH:
210 (N/mm²)

SERVICE CUT OUTS:
80mm x 30mm @ 600mm Centres

SYSTEM PERFORMANCE INFORMATION:
To be installed as a part of a complete Hadley system to achieve both Fire and Acoustic performance. To understand more about our fully warranted and tested solutions, please contact our Hadley Technical Support Team.

STORAGE & HANDLING:

When installing Hadley components please ensure full PPE is used and the site is practicing a safe working environment alongside industry standards.

DISPOSAL:

Hadley Metal is fully recyclable.

SYSTEMS USED:

HadleySOLO – Single Stud System
 HadleyDUO – Twin Frame I Stud System (*used only at abutments)
 HadleyBRACE – Braced Twin Frame System
 HadleyHUSH – Single Stud System using Resilient Bars
 HadleySTAGGER – Staggered Stud System (*used only at abutments)
 HadleyLINE- Independent I Stud Lining System (*used only at abutments)

Item Code : 6262A

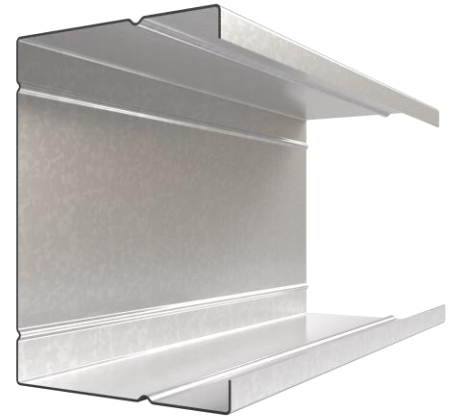
HADLEY 92mm ACOUSTIC C STUDS

Hadley Acoustic C Studs are cold-rolled steel studs used as part of a Hadley System to create non-loadbearing internal partitions.

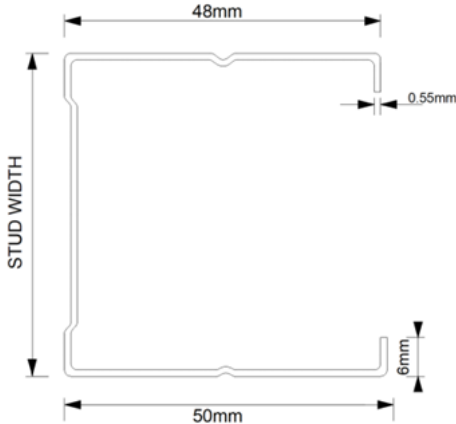
Manufactured in accordance with EN 14195:2005



Scan QR code for Hadley System **Golden Thread Documents: Technical Datasheet, Material Safety Datasheet, Declaration of Performance (DoP), O&M Manual and more...**



Product Information



Width	92mm
Flange	50mm/48mm
Gauge	0.55mm
Lengths	3.0m / 4.2m
Pack Quantities	10 / 50 / 200

REACTION TO FIRE:
A1

YIELD STRENGTH:
210 (N/mm²)

SERVICE CUT OUTS:
80mm x 30mm @ 600mm Centres

SYSTEM PERFORMANCE INFORMATION:
To be installed as a part of a complete Hadley system to achieve both Fire and Acoustic performance. To understand more about our fully warranted and tested solutions, please contact our Hadley Technical Support Team.

STORAGE & HANDLING:

When installing Hadley components please ensure full PPE is used and the site is practicing a safe working environment alongside industry standards.

DISPOSAL:

Hadley Metal is fully recyclable.

SYSTEMS USED:

- HadleySOLO – Single Stud System
- HadleyDUO – Twin Frame I Stud System (*used only at abutments)
- HadleyBRACE – Braced Twin Frame System
- HadleyHUSH – Single Stud System using Resilient Bars
- HadleySTAGGER – Staggered Stud System (*used only at abutments)
- HadleyLINE- Independent I Stud Lining System (*used only at abutments)

Item Code : 5305

HADLEY 52mm Track

Hadley Tracks (U Channels) are cold-rolled steel Tracks used mainly at the head and base junctions of Hadley system to create non-loadbearing internal partitions.

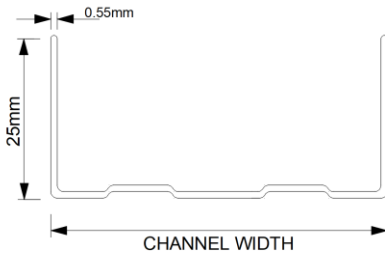
Manufactured in accordance with EN 14195:2005



Scan QR code for Hadley System **Golden Thread Documents: Technical Datasheet, Material Safety Datasheet, Declaration of Performance (DoP), O&M Manual and more...**



Product Information



Width	52mm
Flange	25mm
Gauge	0.55mm
Lengths	3m
Pack Quantities	10 / 50 / 200 / 1000

REACTION TO FIRE:
A1

YIELD STRENGTH:
210 (N/mm²)

SERVICE CUT OUTS:
N/A

SYSTEM PERFORMANCE INFORMATION:
To be installed as a part of a complete Hadley system to achieve both Fire and Acoustic performance. To understand more about our fully warranted and tested solutions, please contact our Hadley Technical Support Team.

STORAGE & HANDLING:

When installing Hadley components please ensure full PPE is used and the site is practicing a safe working environment alongside industry standards.

DISPOSAL:

Hadley Metal is fully recyclable.

SYSTEMS USED:

- HadleySOLO – Single Stud System
- HadleyHUSH– Single Stud with Resilient Bar System
- HadleyDUO – Twin Frame I Stud System
- HadleySHAFT – Shaftwall System
- HadleyBRACE – Twin Framed braced C Stud System
- HadleyLINE – Independent Lining System

Item Code : 581B

HADLEY 62mm Track

Hadley Tracks (U Channels) are cold-rolled steel Tracks used mainly at the head and base junctions of Hadley System to create non-loadbearing internal partitions.

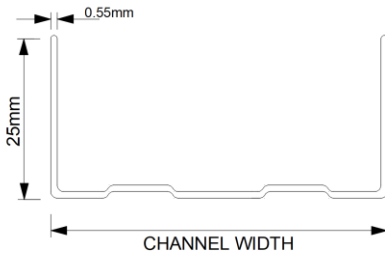
Manufactured in accordance with EN 14195:2005



Scan QR code for Hadley System **Golden Thread Documents: Technical Datasheet, Material Safety Datasheet, Declaration of Performance (DoP), O&M Manual and more...**



Product Information



Width	62mm
Flange	25mm
Gauge	0.55mm
Lengths	3m
Pack Quantities	10 / 100 / 300

REACTION TO FIRE:
A1

YIELD STRENGTH:
210 (N/mm²)

SERVICE CUT OUTS:
N/A

SYSTEM PERFORMANCE INFORMATION:
To be installed as a part of a complete Hadley system to achieve both Fire and Acoustic performance. To understand more about our fully warranted and tested solutions, please contact our Hadley Technical Support Team.

STORAGE & HANDLING:

When installing Hadley components please ensure full PPE is used and the site is practicing a safe working environment alongside industry standards.

DISPOSAL:

Hadley Metal is fully recyclable.

SYSTEMS USED:

- HadleySOLO – Single Stud System
- HadleyHUSH– Single Stud with Resilient Bar System
- HadleyDUO – Twin Frame I Stud System
- HadleySHAFT – Shaftwall System
- HadleyBRACE – Twin Framed braced C Stud System
- HadleyLINE – Independent Lining System

Item Code : 5307

HADLEY 72mm Track

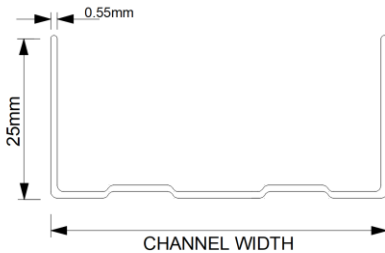
Hadley Tracks (U Channels) are cold-rolled steel Tracks used mainly at the head and base junctions of Hadley System to create non-loadbearing internal partitions.

Manufactured in accordance with EN 14195:2005



Scan QR code for Hadley System **Golden Thread Documents: Technical Datasheet, Material Safety Datasheet, Declaration of Performance (DoP), O&M Manual and more...**

Product Information



Width	72mm
Flange	25mm
Gauge	0.55mm
Lengths	3m
Pack Quantities	10 / 50 / 300 / 600

REACTION TO FIRE:
A1

YIELD STRENGTH:
210 (N/mm²)

SERVICE CUT OUTS:
N/A

SYSTEM PERFORMANCE INFORMATION:
To be installed as a part of a complete Hadley system to achieve both Fire and Acoustic performance. To understand more about our fully warranted and tested solutions, please contact our Hadley Technical Support Team.

STORAGE & HANDLING:

When installing Hadley components please ensure full PPE is used and the site is practicing a safe working environment alongside industry standards.

DISPOSAL:

Hadley Metal is fully recyclable.

SYSTEMS USED:

- HadleySOLO – Single Stud System
- HadleyHUSH– Single Stud with Resilient Bar System
- HadleyDUO – Twin Frame I Stud System
- HadleySHAFT – Shaftwall System
- HadleyBRACE – Twin Framed braced C Stud System
- HadleyLINE – Independent Lining System

Item Code : 5309

HADLEY 94mm Track

Hadley Tracks (U Channels) are cold-rolled steel Tracks used mainly at the head and base junctions of Hadley System to create non-loadbearing internal partitions.

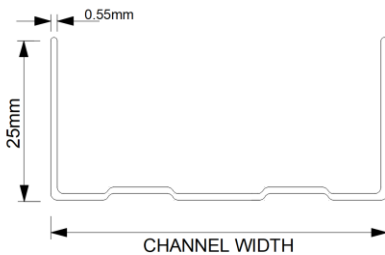
Manufactured in accordance with EN 14195:2005



Scan QR code for Hadley System **Golden Thread Documents: Technical Datasheet, Material Safety Datasheet, Declaration of Performance (DoP), O&M Manual and more...**



Product Information



Width	94mm
Flange	25mm
Gauge	0.55mm
Lengths	3m
Pack Quantities	10 / 50 / 300

REACTION TO FIRE:
A1

YIELD STRENGTH:
210 (N/mm²)

SERVICE CUT OUTS:
N/A

SYSTEM PERFORMANCE INFORMATION:
To be installed as a part of a complete Hadley system to achieve both Fire and Acoustic performance. To understand more about our fully warranted and tested solutions, please contact our Hadley Technical Support Team.

STORAGE & HANDLING:

When installing Hadley components please ensure full PPE is used and the site is practicing a safe working environment alongside industry standards.

DISPOSAL:

Hadley Metal is fully recyclable.

SYSTEMS USED:

- HadleySOLO – Single Stud System
- HadleyHUSH– Single Stud with Resilient Bar System
- HadleyDUO – Twin Frame I Stud System
- HadleySHAFT – Shaftwall System
- HadleyBRACE – Twin Framed braced C Stud System
- HadleyLINE – Independent Lining System

Item Code : 5310B

HADLEY 148mm Track

Hadley Tracks (U Channels) are cold-rolled steel Tracks used mainly at the head and base junctions of Hadley System to create non-loadbearing internal partitions.

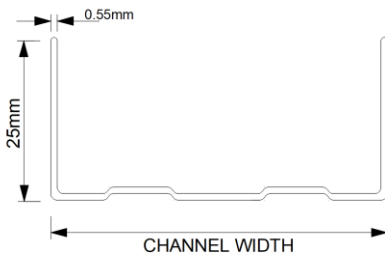
Manufactured in accordance with EN 14195:2005



Scan QR code for Hadley System **Golden Thread Documents: Technical Datasheet, Material Safety Datasheet, Declaration of Performance (DoP), O&M Manual and more...**



Product Information



Width	148mm
Flange	25mm
Gauge	0.55mm
Lengths	3m
Pack Quantities	10 / 80 / 160

REACTION TO FIRE:
A1

YIELD STRENGTH:
210 (N/mm²)

SERVICE CUT OUTS:
N/A

SYSTEM PERFORMANCE INFORMATION:
To be installed as a part of a complete Hadley system to achieve both Fire and Acoustic performance. To understand more about our fully warranted and tested solutions, please contact our Hadley Technical Support Team.

STORAGE & HANDLING:

When installing Hadley components please ensure full PPE is used and the site is practicing a safe working environment alongside industry standards.

DISPOSAL:

Hadley Metal is fully recyclable.

SYSTEMS USED:

- HadleySOLO – Single Stud System
- HadleyHUSH– Single Stud with Resilient Bar System
- HadleyDUO – Twin Frame I Stud System
- HadleySHAFT – Shaftwall System
- HadleyBRACE – Twin Framed braced C Stud System
- HadleyLINE – Independent Lining System

Item Code : 5305B

HADLEY 52mm Deep Track

Hadley Tracks (U Channels) are cold-rolled steel Tracks used mainly at the head and base junctions of Hadley System to create non-loadbearing internal partitions.

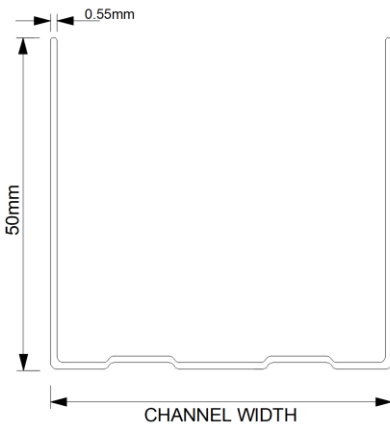
Manufactured in accordance with EN 14195:2005



Scan QR code for Hadley System **Golden Thread Documents: Technical Datasheet, Material Safety Datasheet, Declaration of Performance (DoP), O&M Manual and more...**



Product Information



Flange	50mm
Width	52mm
Gauge	0.55mm
Lengths	3m
Pack Quantities	10 / 50 / 150 / 600

REACTION TO FIRE:
A1

YIELD STRENGTH:
210 (N/mm²)

SERVICE CUT OUTS:
N/A

SYSTEM PERFORMANCE INFORMATION:
To be installed as a part of a complete Hadley system to achieve both Fire and Acoustic performance. To understand more about our fully warranted and tested solutions, please contact our Hadley Technical Support Team.

STORAGE & HANDLING:

When installing Hadley components please ensure full PPE is used and the site is practicing a safe working environment alongside industry standards.

DISPOSAL:

Hadley Metal is fully recyclable.

SYSTEMS USED:

- HadleySOLO – Single Stud System
- HadleyHUSH– Single Stud with Resilient Bar System
- HadleyDUO – Twin Frame I Stud System
- HadleySHAFT – Shaftwall System
- HadleyBRACE – Twin Framed braced C Stud System
- HadleyLINE – Independent Lining System

Item Code : 581

HADLEY 62mm Deep Track

Hadley Tracks (U Channels) are cold-rolled steel Tracks used mainly at the head and base junctions of Hadley System to create non-loadbearing internal partitions.

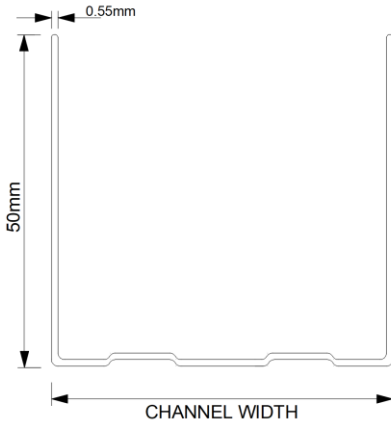
Manufactured in accordance with EN 14195:2005



Scan QR code for Hadley System **Golden Thread** Documents: Technical Datasheet, Material Safety Datasheet, Declaration of Performance (DoP), O&M Manual and more...



Product Information



Flange	50mm
Width	62mm
Gauge	0.55mm
Lengths	3m
Pack Quantities	10 / 100

REACTION TO FIRE:
A1

YIELD STRENGTH:
210 (N/mm²)

SERVICE CUT OUTS:
N/A

SYSTEM PERFORMANCE INFORMATION:
To be installed as a part of a complete Hadley system to achieve both Fire and Acoustic performance. To understand more about our fully warranted and tested solutions, please contact our Hadley Technical Support Team.

STORAGE & HANDLING:

When installing Hadley components please ensure full PPE is used and the site is practicing a safe working environment alongside industry standards.

DISPOSAL:

Hadley Metal is fully recyclable.

SYSTEMS USED:

- HadleySOLO – Single Stud System
- HadleyHUSH– Single Stud with Resilient Bar System
- HadleyDUO – Twin Frame I Stud System
- HadleySHAFT – Shaftwall System
- HadleyBRACE – Twin Framed braced C Stud System
- HadleyLINE – Independent Lining System

Item Code : 669

HADLEY 72mm Deep Track

Hadley Tracks (U Channels) are cold-rolled steel Tracks used mainly at the head and base junctions of Hadley System to create non-loadbearing internal partitions.

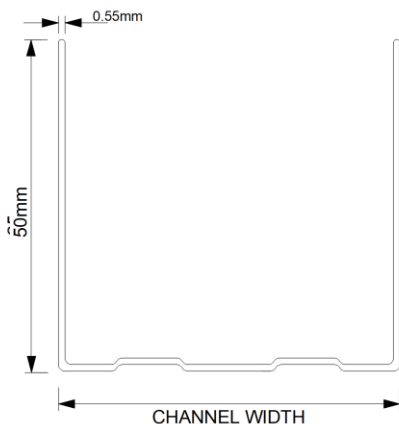
Manufactured in accordance with EN 14195:2005



Scan QR code for Hadley System **Golden Thread** Documents: Technical Datasheet, Material Safety Datasheet, Declaration of Performance (DoP), O&M Manual and more...



Product Information



Flange	50mm
Width	72mm
Gauge	0.55mm
Lengths	3m
Pack Quantities	10 / 50 / 450

REACTION TO FIRE:
A1

YIELD STRENGTH:
210 (N/mm²)

SERVICE CUT OUTS:
N/A

SYSTEM PERFORMANCE INFORMATION:
To be installed as a part of a complete Hadley system to achieve both Fire and Acoustic performance. To understand more about our fully warranted and tested solutions, please contact our Hadley Construction Technology Team.

STORAGE & HANDLING:

When installing Hadley components please ensure full PPE is used and the site is practicing a safe working environment alongside industry standards.

DISPOSAL:

Hadley Metal is fully recyclable.

SYSTEMS USED:

- HadleySOLO – Single Stud System
- HadleyHUSH– Single Stud with Resilient Bar System
- HadleyDUO – Twin Frame I Stud System
- HadleySHAFT – Shaftwall System
- HadleyBRACE – Twin Framed braced C Stud System
- HadleyLINE – Independent Lining System

Item Code : 850

HADLEY 94mm Deep Track

Hadley Tracks (U Channels) are cold-rolled steel Tracks used mainly at the head and base junctions of Hadley System to create non-loadbearing internal partitions.

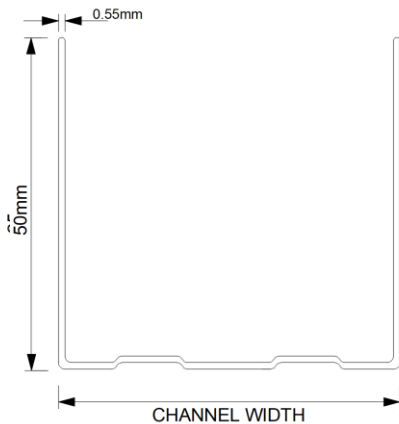
Manufactured in accordance with EN 14195:2005



Scan QR code for Hadley System **Golden Thread Documents: Technical Datasheet, Material Safety Datasheet, Declaration of Performance (DoP), O&M Manual and more...**



Product Information



Flange	50mm
Width	94mm
Gauge	0.55mm
Lengths	3m
Pack Quantities	10 / 50 / 200

REACTION TO FIRE:
A1

YIELD STRENGTH:
210 (N/mm²)

SERVICE CUT OUTS:
N/A

SYSTEM PERFORMANCE INFORMATION:
To be installed as a part of a complete Hadley system to achieve both Fire and Acoustic performance. To understand more about our fully warranted and tested solutions, please contact our Hadley Construction Technology Team.

STORAGE & HANDLING:

When installing Hadley components please ensure full PPE is used and the site is practicing a safe working environment alongside industry standards.

DISPOSAL:

Hadley Metal is fully recyclable.

SYSTEMS USED:

- HadleySOLO – Single Stud System
- HadleyHUSH– Single Stud with Resilient Bar System
- HadleyDUO – Twin Frame I Stud System
- HadleySHAFT – Shaftwall System
- HadleyBRACE – Twin Framed braced C Stud System
- HadleyLINE – Independent Lining System

Item Code : 5310A

HADLEY 148mm Deep Track

Hadley Tracks (U Channels) are cold-rolled steel Tracks used mainly at the head and base junctions of Hadley System to create non-loadbearing internal partitions.

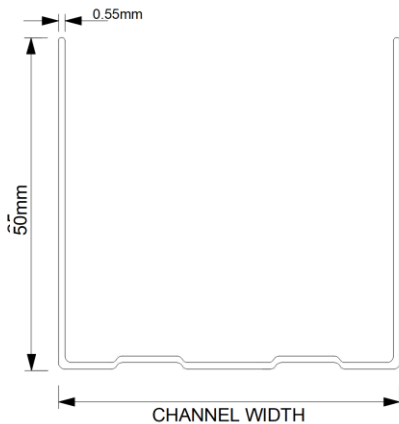
Manufactured in accordance with EN 14195:2005



Scan QR code for Hadley System **Golden Thread** Documents: Technical Datasheet, Material Safety Datasheet, Declaration of Performance (DoP), O&M Manual and more...



Product Information



Flange	50mm
Width	148mm
Gauge	0.55mm
Lengths	3m
Pack Quantities	10 / 100

REACTION TO FIRE:
A1

YIELD STRENGTH:
210 (N/mm²)

SERVICE CUT OUTS:
N/A

SYSTEM PERFORMANCE INFORMATION:
To be installed as a part of a complete Hadley system to achieve both Fire and Acoustic performance. To understand more about our fully warranted and tested solutions, please contact our Hadley Technical Support Team.

STORAGE & HANDLING:

When installing Hadley components please ensure full PPE is used and the site is practicing a safe working environment alongside industry standards.

DISPOSAL:

Hadley Metal is fully recyclable.

SYSTEMS USED:

- HadleySOLO – Single Stud System
- HadleyHUSH– Single Stud with Resilient Bar System
- HadleyDUO – Twin Frame I Stud System
- HadleySHAFT – Shaftwall System
- HadleyBRACE – Twin Framed braced C Stud System
- HadleyLINE – Independent Lining System

Item Code : 782

HADLEY 72mm Extra Deep Track

Hadley Extra Deep Tracks (U Channel) are cold-rolled Steel Tracks used mainly at the head and base junctions of Hadley Systems to create non-loadbearing internal partitions.

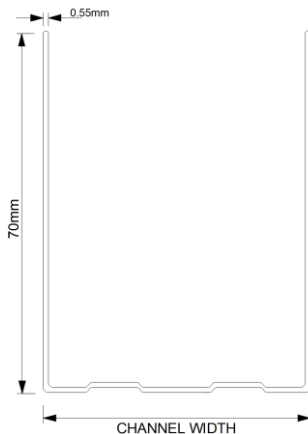
Manufactured in accordance with EN 14195:2005



Scan QR code for Hadley System **Golden Thread** Documents: Technical Datasheet, Material Safety Datasheet, Declaration of Performance (DoP), O&M Manual and more...



Product Information



Flange	70mm
Width	94mm
Gauge	0.55mm
Lengths	3m
Pack Quantities	10 / 100

REACTION TO FIRE:
A1

YIELD STRENGTH:
210 (N/mm²)

SERVICE CUT OUTS:
N/A

SYSTEM PERFORMANCE INFORMATION:
To be installed as a part of a complete Hadley system to achieve both Fire and Acoustic performance. To understand more about our fully warranted and tested solutions, please contact our Hadley Construction Technology Team.

STORAGE & HANDLING:

When installing Hadley components please ensure full PPE is used and the site is practicing a safe working environment alongside industry standards.

DISPOSAL:

Hadley Metal is fully recyclable.

SYSTEMS USED:

- HadleySOLO – Single Stud System
- HadleyHUSH– Single Stud with Resilient Bar System
- HadleyDUO – Twin Frame I Stud System
- HadleySHAFT – Shaftwall System
- HadleyBRACE – Twin Framed braced C Stud System
- HadleyLINE – Independent Lining System

Item Code : 783

HADLEY 94mm Extra Deep Track

Hadley Extra Deep Tracks (U Channel) are cold-rolled Steel Tracks used mainly at the head and base junctions of Hadley Systems to create non-loadbearing internal partitions.

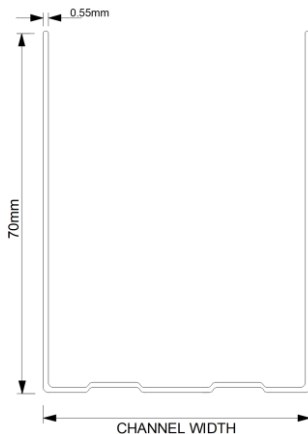
Manufactured in accordance with EN 14195:2005



Scan QR code for Hadley System **Golden Thread Documents: Technical Datasheet, Material Safety Datasheet, Declaration of Performance (DoP), O&M Manual and more...**



Product Information



Flange	70mm
Width	94mm
Gauge	0.55mm
Lengths	3m
Pack Quantities	10 / 100

REACTION TO FIRE:
A1

YIELD STRENGTH:
210 (N/mm²)

SERVICE CUT OUTS:
N/A

SYSTEM PERFORMANCE INFORMATION:
To be installed as a part of a complete Hadley system to achieve both Fire and Acoustic performance. To understand more about our fully warranted and tested solutions, please contact our Hadley Construction Technology Team.

STORAGE & HANDLING:

When installing Hadley components please ensure full PPE is used and the site is practicing a safe working environment alongside industry standards.

DISPOSAL:

Hadley Metal is fully recyclable.

SYSTEMS USED:

- HadleySOLO – Single Stud System
- HadleyHUSH– Single Stud with Resilient Bar System
- HadleyDUO – Twin Frame I Stud System
- HadleySHAFT – Shaftwall System
- HadleyBRACE – Twin Framed braced C Stud System
- HadleyLINE – Independent Lining System

Item Code : 784

HADLEY 148mm Extra Deep Track

Hadley Extra Deep Tracks (U Channel) are cold-rolled Steel Tracks used mainly at the head and base junctions of Hadley Systems to create non-loadbearing internal partitions.

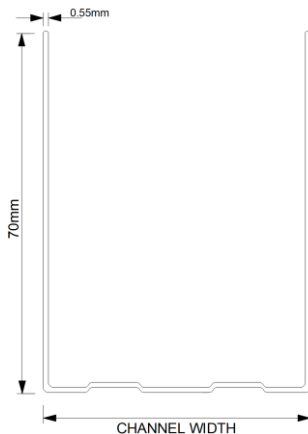
Manufactured in accordance with EN 14195:2005



Scan QR code for Hadley System **Golden Thread** Documents: Technical Datasheet, Material Safety Datasheet, Declaration of Performance (DoP), O&M Manual and more...



Product Information



Flange	70mm
Width	148mm
Gauge	0.55mm
Lengths	3m
Pack Quantities	10 / 100

REACTION TO FIRE:
A1

YIELD STRENGTH:
210 (N/mm²)

SERVICE CUT OUTS:
N/A

SYSTEM PERFORMANCE INFORMATION:
To be installed as a part of a complete Hadley system to achieve both Fire and Acoustic performance. To understand more about our fully warranted and tested solutions, please contact our Hadley Construction Technology Team.

STORAGE & HANDLING:

When installing Hadley components please ensure full PPE is used and the site is practicing a safe working environment alongside industry standards.

DISPOSAL:

Hadley Metal is fully recyclable.

SYSTEMS USED:

- HadleySOLO – Single Stud System
- HadleyHUSH– Single Stud with Resilient Bar System
- HadleyDUO – Twin Frame I Stud System
- HadleySHAFT – Shaftwall System
- HadleyBRACE – Twin Framed braced C Stud System
- HadleyLINE – Independent Lining System

Item Code : 2206A

HADLEY LINER STUD

Hadley Liner Stud is used as the vertical studs on our HadleySHIELD system.

Manufactured in accordance with EN 14195:2005



Scan QR code for Hadley System **Golden Thread Documents: Technical Datasheet, Material Safety Datasheet, Declaration of Performance (DoP), O&M Manual and more...**

Product Information



Width	45mm
Flange	18mm
Gauge	0.5mm
Lengths	2.4m / 2.7m / 3m / 3.6m
Pack Quantities	10 / 500

REACTION TO FIRE:
A1

SERVICE CUT OUTS:
N/A

SYSTEM PERFORMANCE INFORMATION:
To be installed as a part of a complete Hadley system to achieve both Fire and Acoustic performance. To understand more about our fully warranted and tested solutions, please contact our Hadley Construction Technology Team.

STORAGE & HANDLING:

When installing Hadley components please ensure full PPE is used and the site is practicing a safe working environment alongside industry standards.

DISPOSAL:

Hadley Metal is fully recyclable.

SYSTEMS USED:

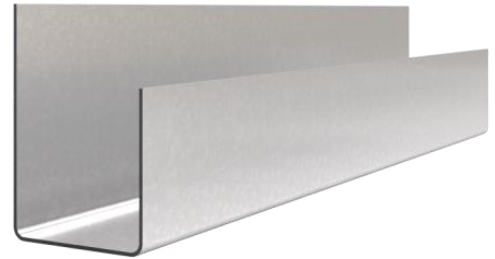
HadleySHIELD – Wall Lining System

Item Code : 5217

HADLEY LINER TRACK

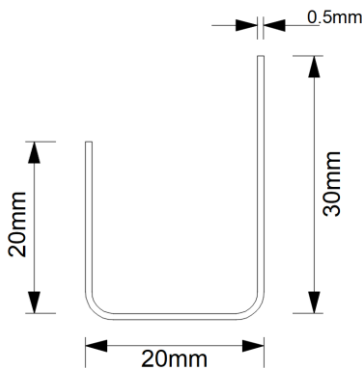
Hadley Liner Track is secured to the head and base of HadleySHIELD system to receive ends of Hadley Liner Studs.

Manufactured in accordance with EN 14195:2005



Scan QR code for Hadley System **Golden Thread** Documents: Technical Datasheet, Material Safety Datasheet, Declaration of Performance (DoP), O&M Manual and more...

Product Information



Width	20mm
Flange	20mm / 30mm
Gauge	0.5mm
Lengths	3m / 3.6m
Pack Quantities	10 / 100 / 500

REACTION TO FIRE:
A1

SERVICE CUT OUTS:
N/A

SYSTEM PERFORMANCE INFORMATION:
To be installed as a part of a complete Hadley system to achieve both Fire and Acoustic performance. To understand more about our fully warranted and tested solutions, please contact our Hadley Construction Technology Team.

STORAGE & HANDLING:

When installing Hadley components please ensure full PPE is used and the site is practicing a safe working environment alongside industry standards.

DISPOSAL:

Hadley Metal is fully recyclable.

SYSTEMS USED:

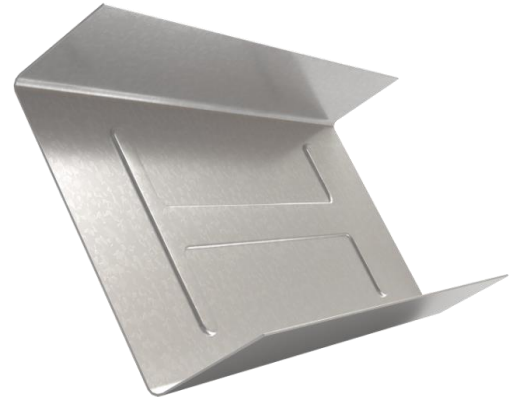
HadleySHIELD – Wall Lining System

Item Code : 5262

HADLEY LINER CONNECTOR

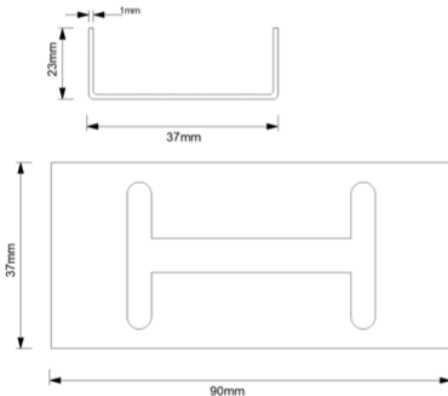
Hadley Liner Connector is used to safely splice the Hadley Liner Track when using our HadleySHIELD system.

Manufactured in accordance with EN 14195:2005



Scan QR code for Hadley System **Golden Thread Documents: Technical Datasheet, Material Safety Datasheet, Declaration of Performance (DoP), O&M Manual and more...**

Product Information



Width	42.6mm
Flange	16mm
Length	90mm
Gauge	0.5mm
Pack Quantities	100

REACTION TO FIRE:
A1

SERVICE CUT OUTS:
N/A

SYSTEM PERFORMANCE INFORMATION:
To be installed as a part of a complete Hadley system to achieve both Fire and Acoustic performance. To understand more about our fully warranted and tested solutions, please contact our Hadley Construction Technology Team.

STORAGE & HANDLING:

When installing Hadley components please ensure full PPE is used and the site is practicing a safe working environment alongside industry standards.

DISPOSAL:

Hadley Metal is fully recyclable.

SYSTEMS USED:

HadleySHIELD – Wall Lining System

Item Code : 1900

HADLEY ANGLE (25mm x 25mm)

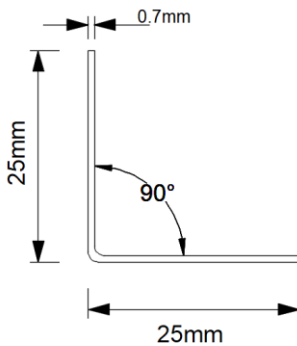
Hadley Angle is used as part of a Hadley System to create non-loadbearing internal partitions.

Manufactured in accordance with EN 14195:2005



Scan QR code for Hadley System **Golden Thread Documents: Technical Datasheet, Material Safety Datasheet, Declaration of Performance (DoP), O&M Manual and more...**

Product Information



Size	25mm x 25mm
Gauge	0.7mm
Lengths	3.0m / 3.6m
Pack Quantities	20 / 500

REACTION TO FIRE:
A1

SERVICE CUT OUTS:
N/A

SYSTEM PERFORMANCE INFORMATION:
To be installed as a part of a complete Hadley system to achieve both Fire and Acoustic performance. To understand more about our fully warranted and tested solutions, please contact our Hadley Construction Technology Team.

STORAGE & HANDLING:

When installing Hadley components please ensure full PPE is used and the site is practicing a safe working environment alongside industry standards.

DISPOSAL:

Hadley Metal is fully recyclable.

SYSTEMS USED:

All Hadley Systems

Item Code : 2012

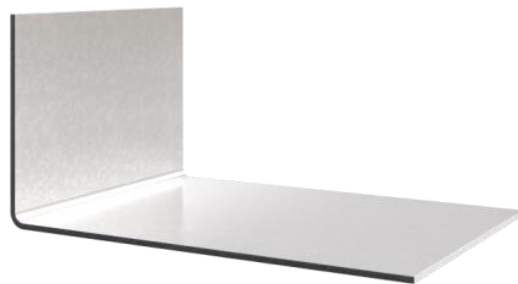
HADLEY ANGLE (50mm x 25mm)

Hadley Angle is used as part of a Hadley System to create non-loadbearing internal partitions.

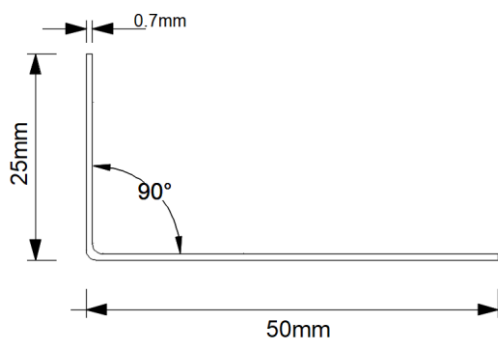
Manufactured in accordance with EN 14195:2005



Scan QR code for Hadley System **Golden Thread Documents: Technical Datasheet, Material Safety Datasheet, Declaration of Performance (DoP), O&M Manual and more...**



Product Information



Size	50mm x 25mm
Gauge	0.7mm
Lengths	3.0m / 3.6m
Pack Quantities	10 / 200

REACTION TO FIRE:
A1

SERVICE CUT OUTS:
N/A

SYSTEM PERFORMANCE INFORMATION:
To be installed as a part of a complete Hadley system to achieve both Fire and Acoustic performance. To understand more about our fully warranted and tested solutions, please contact our Hadley Construction Technology Team.

STORAGE & HANDLING:
When installing Hadley components please ensure full PPE is used and the site is practicing a safe working environment alongside industry standards.

DISPOSAL:
Hadley Metal is fully recyclable.

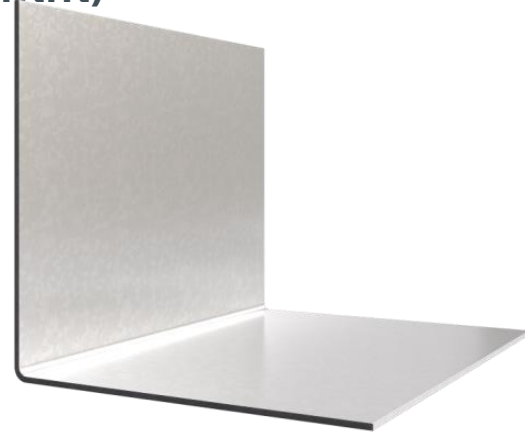
SYSTEMS USED:
All Hadley Systems

Item Code : 1901

HADLEY ANGLE (50mm x 50mm)

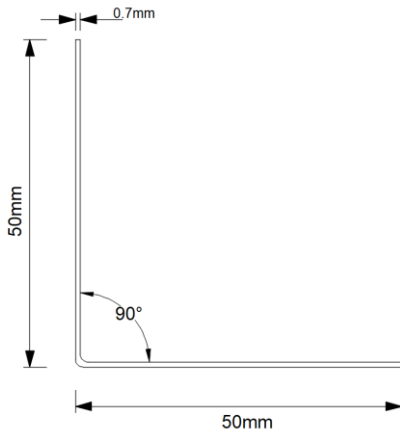
Hadley Angle is used as part of a Hadley System to create non-loadbearing internal partitions.

Manufactured in accordance with EN 14195:2005



Scan QR code for Hadley System **Golden Thread Documents: Technical Datasheet, Material Safety Datasheet, Declaration of Performance (DoP), O&M Manual and more...**

Product Information



Size	50mm x 50mm
Gauge	0.7mm
Lengths	3.0m / 3.6m
Pack Quantities	10 / 200

REACTION TO FIRE:
A1

SERVICE CUT OUTS:
N/A

SYSTEM PERFORMANCE INFORMATION:
To be installed as a part of a complete Hadley system to achieve both Fire and Acoustic performance. To understand more about our fully warranted and tested solutions, please contact our Hadley Construction Technology Team.

STORAGE & HANDLING:

When installing Hadley components please ensure full PPE is used and the site is practicing a safe working environment alongside industry standards.

DISPOSAL:

Hadley Metal is fully recyclable.

SYSTEMS USED:

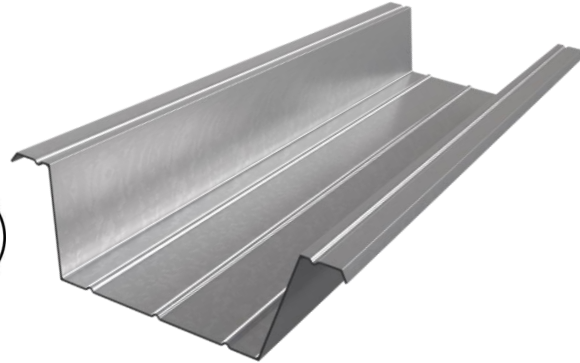
All Hadley Systems

Item Code : 988

HADLEY CEILING FURRING MF5

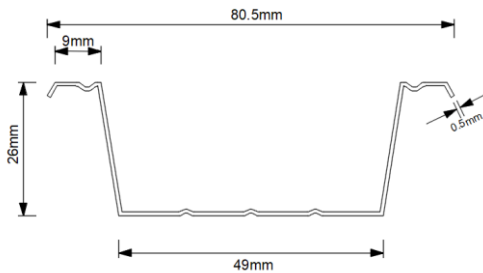
Hadley Ceiling Furring Channel MF5 is used as the secondary channel within our HadleyMF Ceiling System to allow for plasterboard fixings. Fixed to Hadley MF7 Primary Channels.

Manufactured in accordance with EN 14195:2005



Scan QR code for Hadley System **Golden Thread** Documents: Technical Datasheet, Material Safety Datasheet, Declaration of Performance (DoP), O&M Manual and more...

Product Information



Depth	26mm
Width	80.5mm
Gauge	0.5mm
Lengths	3.6m
Pack Quantities	25 / 100 / 200

REACTION TO FIRE:
A1

SERVICE CUT OUTS:
N/A

SYSTEM PERFORMANCE INFORMATION:
For performance information on our Hadley systems please contact Hadley Construction Technology Team.

STORAGE & HANDLING:

When installing Hadley components please ensure full PPE is used and the site is practicing a safe working environment alongside industry standards.

DISPOSAL:

Hadley Metal is fully recyclable.

SYSTEMS USED:

HadleyMF - Ceiling System

Item Code : 989

HADLEY PERIMETER CHANNEL MF6A

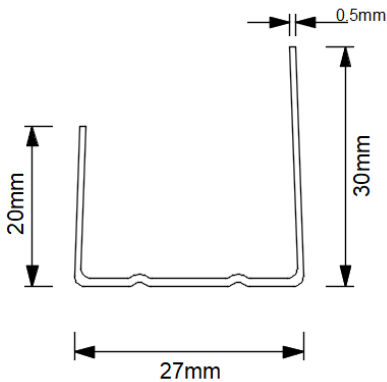
Hadley Perimeter Channel MF6A is installed into the perimeter of the substrate to receive ends of of MF5 Secondary Channel Sections.

Manufactured in accordance with EN 14195:2005



Scan QR code for Hadley System **Golden Thread Documents: Technical Datasheet, Material Safety Datasheet, Declaration of Performance (DoP), O&M Manual and more...**

Product Information



Depth	20mm / 30mm
Width	27mm
Gauge	0.5mm
Lengths	3.6m
Pack Quantities	10 / 200 / 400

REACTION TO FIRE:
A1

SERVICE CUT OUTS:
N/A

SYSTEM PERFORMANCE INFORMATION:
For performance information on our HadleyMF Ceiling systems please contact the Hadley Construction Technology Team.

STORAGE & HANDLING:

When installing Hadley components please ensure full PPE is used and the site is practicing a safe working environment alongside industry standards.

DISPOSAL:

Hadley Metal is fully recyclable.

SYSTEMS USED:

HadleyMF - Ceiling System

Item Code : 311B

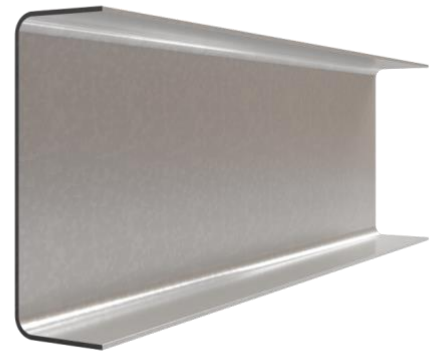
HADLEY PRIMARY CHANNEL MF7

Hadley Primary Channel MF7 is used as the primary channel within our HadleyMF Ceiling allowing a fixing point for the MF5 Channels. Connected to Hadley Steel Hangers to form system grid.

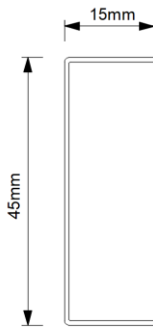
Manufactured in accordance with EN 14195:2005



Scan QR code for Hadley System **Golden Thread** Documents: Technical Datasheet, Material Safety Datasheet, Declaration of Performance (DoP), O&M Manual and more...



Product Information



Depth	15mm
Width	45mm
Gauge	0.7mm
Lengths	3.6m
Pack Quantities	10 / 200

REACTION TO FIRE:
A1

SERVICE CUT OUTS:
N/A

SYSTEM PERFORMANCE INFORMATION:
For performance information on our Hadley systems please contact the Hadley Construction Technology Team.

STORAGE & HANDLING:

When installing Hadley components please ensure full PPE is used and the site is practicing a safe working environment alongside industry standards.

DISPOSAL:

Hadley Metal is fully recyclable.

SYSTEMS USED:

HadleyMF - Ceiling System

Item Code : 2593B

HADLEY RESILIENT BAR

Hadley Resilient Bar when used alongside our HadleyHUSH System helps improve acoustic performance by isolating the outer plasterboard lining from the rest of the partition.

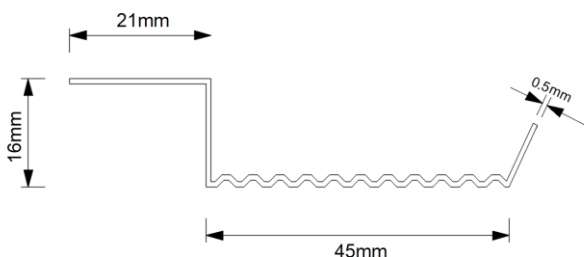
Manufactured in accordance with EN 14195:2005



Scan QR code for Hadley System **Golden Thread Documents: Technical Datasheet, Material Safety Datasheet, Declaration of Performance (DoP), O&M Manual and more...**



Product Information



Stand-off	16mm
Gauge	0.5mm
Lengths	3m
Pack Quantities	20 / 100 / 500

REACTION TO FIRE:

A1

SERVICE CUT OUTS:

N/A

INSTALLATION:

Ensure that the screw fixings into the plasterboard are not penetrating both resilient bar and stud. This may have a detrimental effect on the acoustic performance of the partition.

SYSTEM PERFORMANCE INFORMATION:

To be installed as a part of a complete Hadley system to achieve both Fire and Acoustic performance. To understand more about our fully warranted and tested solutions, please contact our Hadley Construction Technology Team.

STORAGE & HANDLING:

When installing Hadley components please ensure full PPE is used and the site is practicing a safe working environment alongside industry standards.

DISPOSAL:

Hadley Metal is fully recyclable.

SYSTEMS USED:

HadleyHUSH- Single Stud with Resilient Bar System

Item Code : 5179

HADLEY FLAT STRAP

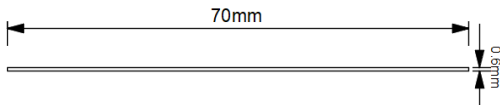
Hadley Flat Strap is used to strengthen Horizontal joints and to allow for a secure fixing point within a deflection head build up.

Manufactured in accordance with EN 14195:2005



Scan QR code for Hadley System **Golden Thread** Documents: Technical Datasheet, Material Safety Datasheet, Declaration of Performance (DoP), O&M Manual and more...

Product Information



Size	70mm
Gauge	0.6mm
Lengths	2.4m
Pack Quantities	20 / 500

REACTION TO FIRE:
A1

SERVICE CUT OUTS:
N/A

SYSTEM PERFORMANCE INFORMATION:
To be installed as a part of a complete Hadley system to achieve both Fire and Acoustic performance. To understand more about our fully warranted and tested solutions, please contact our Hadley Construction Technology Team.

STORAGE & HANDLING:
When installing Hadley components please ensure full PPE is used and the site is practicing a safe working environment alongside industry standards.

DISPOSAL:
Hadley Metal is fully recyclable.

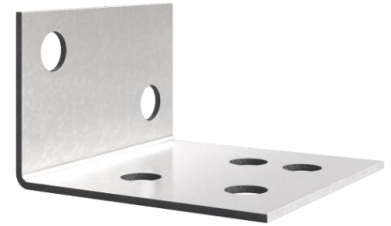
SYSTEMS USED:
All Hadley Systems

Item Code : 6294

HADLEY SHAFTCORE ANGLE BRACKET

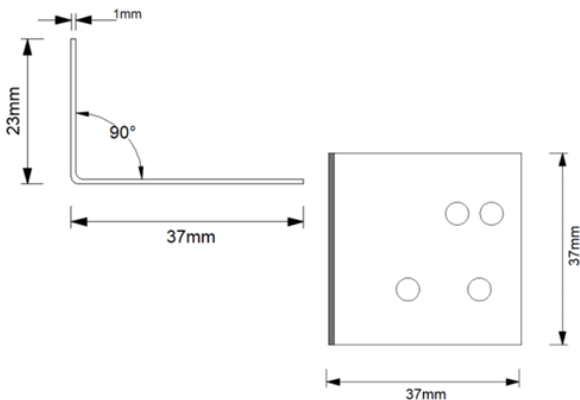
Hadley Shaftcore Angle Bracket is used to create a cavity to friction fix the Coreboard layer of Plasterboard without the use of screw fixing.

Manufactured in accordance with EN 14195:2005



Scan QR code for Hadley System **Golden Thread Documents: Technical Datasheet, Material Safety Datasheet, Declaration of Performance (DoP), O&M Manual and more...**

Product Information



Size	1.0mm
Pack Quantities	100

REACTION TO FIRE:
A1

SERVICE CUT OUTS:
N/A

SYSTEM PERFORMANCE INFORMATION:
To be installed as a part of a complete Hadley system to achieve both Fire and Acoustic performance. To understand more about our fully warranted and tested solutions, please contact our Hadley Construction Technology Team.

STORAGE & HANDLING:

When installing Hadley components please ensure full PPE is used and the site is practicing a safe working environment alongside industry standards.

DISPOSAL:

Hadley Metal is fully recyclable.

SYSTEMS USED:

HadleySHAFT – Shaftwall Systems

Item Code : 5260

HADLEY SHORT LEG LINER BRACKET

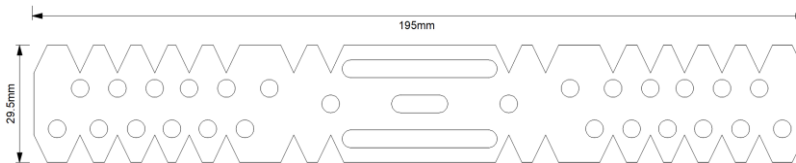
Hadley Short Leg Liner Bracket is used to offset a uniform distance from an existing wall when building a HadleySHIELD System.

Manufactured in accordance with EN 14195:2005



Scan QR code for Hadley System **Golden Thread** Documents: Technical Datasheet, Material Safety Datasheet, Declaration of Performance (DoP), O&M Manual and more...

Product Information



Gauge	0.9mm
Length	195mm
Pack Quantities	100

REACTION TO FIRE:
A1

SERVICE CUT OUTS:
N/A

SYSTEM PERFORMANCE INFORMATION:
To be installed as a part of a complete Hadley system to achieve both Fire and Acoustic performance. To understand more about our fully warranted and tested solutions, please contact our Hadley Construction Technology Team.

STORAGE & HANDLING:

When installing Hadley components please ensure full PPE is used and the site is practicing a safe working environment alongside industry standards.

DISPOSAL:

Hadley Metal is fully recyclable.

SYSTEMS USED:

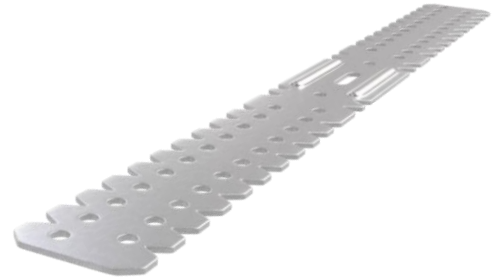
HadleySHIELD – Wall Lining System

Item Code : 5261

HADLEY LONG LEG LINER BRACKET

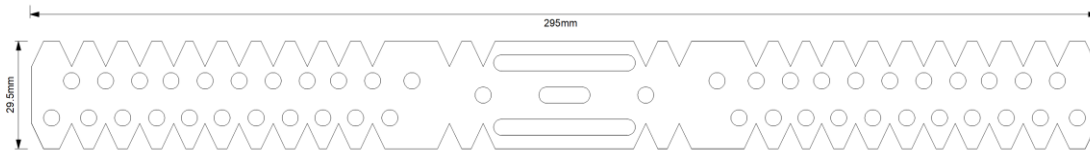
Hadley Long Leg Liner Bracket is used to offset a uniform distance from an existing wall when building a HadleySHIELD System.

Manufactured in accordance with EN 14195:2005



Scan QR code for Hadley System **Golden Thread Documents: Technical Datasheet, Material Safety Datasheet, Declaration of Performance (DoP), O&M Manual and more...**

Product Information



Gauge	0.9mm
Length	295mm
Pack Quantities	100

REACTION TO FIRE:
A1

SERVICE CUT OUTS:
N/A

SYSTEM PERFORMANCE INFORMATION:
To be installed as a part of a complete Hadley system to achieve both Fire and Acoustic performance. To understand more about our fully warranted and tested solutions, please contact our Hadley Construction Technology Team.

STORAGE & HANDLING:

When installing Hadley components please ensure full PPE is used and the site is practicing a safe working environment alongside industry standards.

DISPOSAL:

Hadley Metal is fully recyclable.

SYSTEMS USED:

HadleySHIELD – Wall Lining System

Item Code : 5069

HADLEY METAL FURRING CLIP

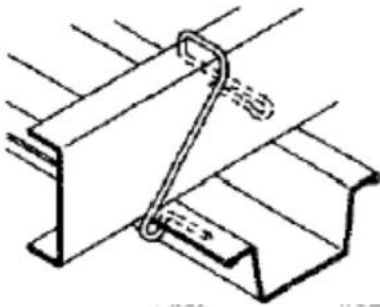
Hadley Metal Furring Clip is used to fix both the Hadley Primary Channel MF7 and the Hadley Ceiling Furring MF5 together when using the HadleyMF System.

Manufactured in accordance with BS EN 13964:2014



Scan QR code for Hadley System **Golden Thread Documents: Technical Datasheet, Material Safety Datasheet, Declaration of Performance (DoP), O&M Manual and more...**

Product Information



Size	2.64mm
Pack Quantities	100

REACTION TO FIRE:
N/A

SERVICE CUT OUTS:
N/A

SYSTEM PERFORMANCE INFORMATION:
To be installed as a part of a complete Hadley system to achieve both Fire and Acoustic performance. To understand more about our fully warranted and tested solutions, please contact our Hadley Construction Technology Team.

STORAGE & HANDLING:

When installing Hadley components please ensure full PPE is used and the site is practicing a safe working environment alongside industry standards.

DISPOSAL:

Hadley Metal is fully recyclable.

SYSTEMS USED:

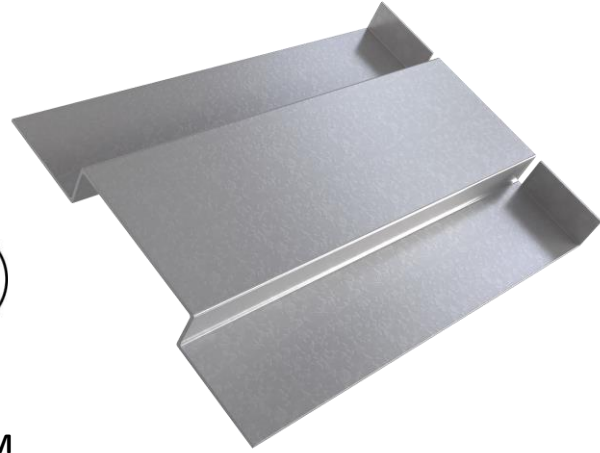
HadleyMF – Suspended Ceiling System

Item Code : 6672

HADLEY 12mm SERVICE SUPPORT PLATE

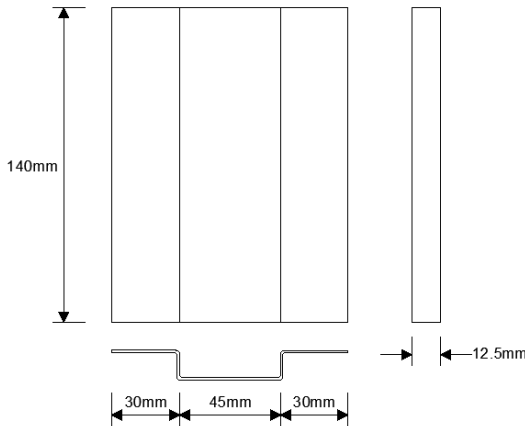
Hadley Service Support Plates are used to secure 12mm Plywood to allow services to be fixed to the face of a Partition.

Manufactured in accordance with EN 14195:2005



Scan QR code for Hadley System **Golden Thread Documents: Technical Datasheet, Material Safety Datasheet, Declaration of Performance (DoP), O&M Manual and more...**

Product Information



Depth	12mm
Gauge	0.6mm
Pack Quantities	Box of 100

REACTION TO FIRE:
A1

SERVICE CUT OUTS:
N/A

SYSTEM PERFORMANCE INFORMATION:
To be installed as a part of a complete Hadley system to achieve both Fire and Acoustic performance. To understand more about our fully warranted and tested solutions, please contact our Hadley Construction Technology Team.

STORAGE & HANDLING:

When installing Hadley components please ensure full PPE is used and the site is practicing a safe working environment alongside industry standards.

DISPOSAL:

Hadley Metal is fully recyclable.

SYSTEMS USED:

All Hadley Systems

SYSTEM PERFORMANCE INFORMATION:

For installation guidance please refer to the Hadley HAD243 / HAD244 Service Support Plate Installation Details

Item Code : 6673

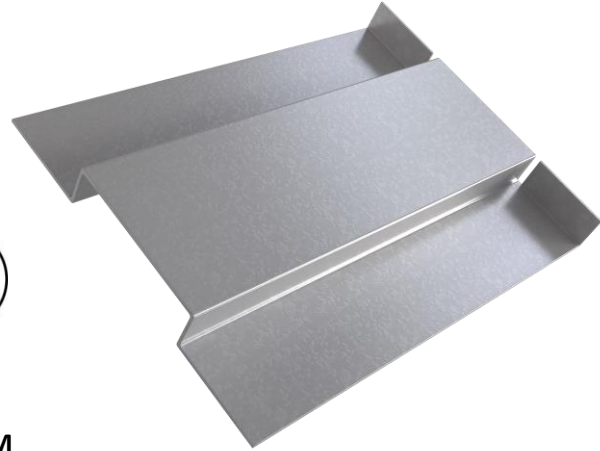
HADLEY 18mm SERVICE SUPPORT PLATE

Hadley Service Support Plates are used to secure 18mm Plywood to allow services to be fixed to the face of a Partition.

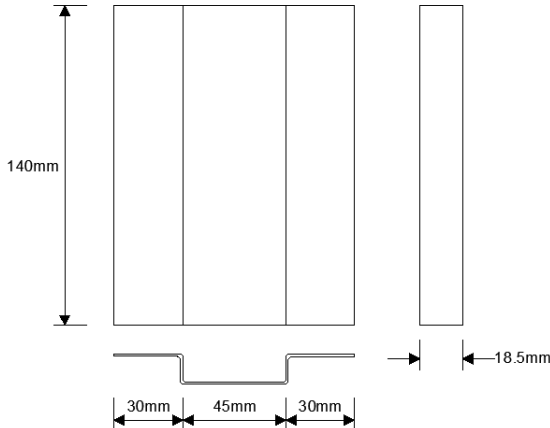
Manufactured in accordance with EN 14195:2005



Scan QR code for Hadley System **Golden Thread** Documents: Technical Datasheet, Material Safety Datasheet, Declaration of Performance (DoP), O&M Manual and more...



Product Information



Depth	18mm
Gauge	0.6mm
Pack Quantities	Box of 100

REACTION TO FIRE:
A1

SERVICE CUT OUTS:
N/A

SYSTEM PERFORMANCE INFORMATION:
To be installed as a part of a complete Hadley system to achieve both Fire and Acoustic performance. To understand more about our fully warranted and tested solutions, please contact our Hadley Construction Technology Team.

STORAGE & HANDLING:

When installing Hadley components please ensure full PPE is used and the site is practicing a safe working environment alongside industry standards.

DISPOSAL:

Hadley Metal is fully recyclable.

SYSTEMS USED:

All Hadley Systems

SYSTEM PERFORMANCE INFORMATION:

For installation guidance please refer to the Hadley HAD243 / HAD244 Service Support Plate Installation Details

Item Code : 6763

HADLEY STAGGERED STUD CLIP (SC1)

Hadley Staggered Stud Clip is used within a HadleySTAGGER system to offset and secure the Hadley I Stud when placed within the Hadley Track.

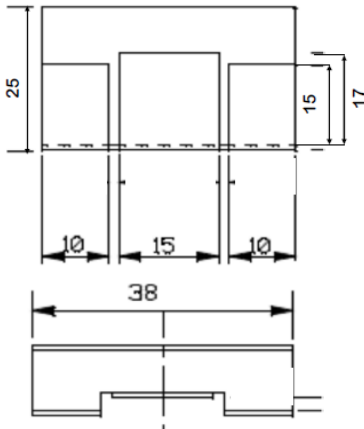
Manufactured in accordance with EN 14195:2005



Scan QR code for Hadley System **Golden Thread Documents: Technical Datasheet, Material Safety Datasheet, Declaration of Performance (DoP), O&M Manual and more...**



Product Information



Size	38mm
Gauge	0.9mm
Pack Quantities	100

REACTION TO FIRE:
A1

SERVICE CUT OUTS:
N/A

SYSTEM PERFORMANCE INFORMATION:
To be installed as a part of a complete Hadley system to achieve both Fire and Acoustic performance. To understand more about our fully warranted and tested solutions, please contact our Hadley Construction Technology Team.

STORAGE & HANDLING:

When installing Hadley components please ensure full PPE is used and the site is practicing a safe working environment alongside industry standards.

DISPOSAL:

Hadley Metal is fully recyclable.

SYSTEMS USED:

HadleySTAGGER – Staggered I Stud System

Item Code : 5288

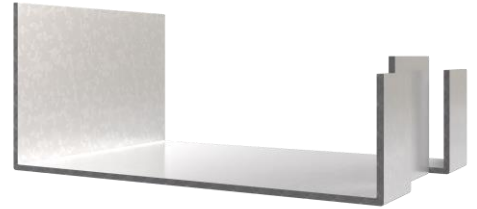
HADLEY STAGGERED STUD CLIP (SC2)

Hadley Staggered Stud Clip is used within a HadleySTAGGER system to offset and secure the Hadley I Stud when placed within the Hadley Track.

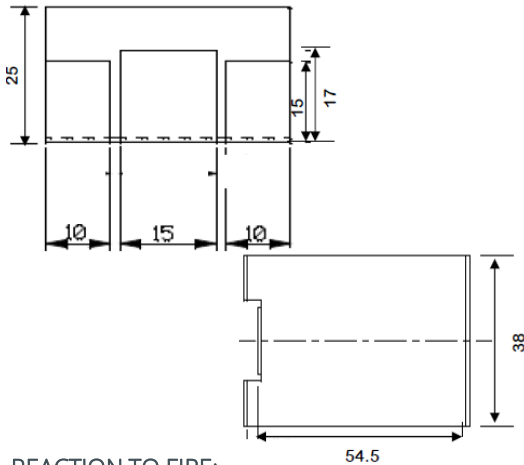
Manufactured in accordance with EN 14195:2005



Scan QR code for Hadley System **Golden Thread Documents: Technical Datasheet, Material Safety Datasheet, Declaration of Performance (DoP), O&M Manual and more...**



Product Information



Size	54mm
Gauge	0.9mm
Pack Quantities	100

REACTION TO FIRE:
A1

SERVICE CUT OUTS:
N/A

SYSTEM PERFORMANCE INFORMATION:
To be installed as a part of a complete Hadley system to achieve both Fire and Acoustic performance. To understand more about our fully warranted and tested solutions, please contact our Hadley Construction Technology Team.

STORAGE & HANDLING:

When installing Hadley components please ensure full PPE is used and the site is practicing a safe working environment alongside industry standards.

DISPOSAL:

Hadley Metal is fully recyclable.

SYSTEMS USED:

HadleySTAGGER – Staggered I Stud System

HADLEY METAL PRODUCTS



Scan QR code for Hadley Drylining
**Golden Thread Documents: Technical
Datasheet, Material Safety Datasheet,
Declaration of Performance (DoP),
O&M Manual and more...**

Section 1: Identification of the Product

Product Range: Hadley Drylining Metal Products

Section 1.1: Name of the Product

Hadley C Stud
Hadley I Stud
Hadley Acoustic C Stud
Hadley Track
Hadley Deep Track
Hadley Extra Deep Track
Hadley Liner Stud
Hadley Liner Track
Hadley Angle
Hadley MF Ceiling Furring MF5
Hadley MF Ceiling Perimeter Channel MF6A
Hadley MF Ceiling Primary Channel MF7
Hadley Resilient Bar
Hadley Flat Strap
Hadley Brackets
Hadley Service Support Plates
Hadley Metal Furring Clip
Hadley Liner Connector

Section 1.2: Intended uses of the substance or mixture and uses advised against

Intended for use in conjunction with Plasterboard products manufactured in accordance with BS EN 520:2004 and a fully tested specified Hadley System.

Section 1.3: Details of Supplier

Manufacturer's Name: Hadley Group

Manufacturer's Address:

Hadley Group,
Gaitskell Way,
Smethwick,
B66 1BF.

Emergency Telephone Number: Tel: 0121 555 1400

Email: ask.hadley@hadleygroup.com

Section 2: Hazard(s) Identification

Classification of the Substance or Mixture:

2.1 Physical Hazards:

Not classified as hazardous according to Regulation (EC) No 1272/2008 [CLP]

2.2 Health Hazards:

Not classified as dangerous according to Directive 67/548/EEC [DSD]

2.3 Environmental Hazards:

Not classified as dangerous according to Directive 67/548/EEC [DSD]

2.4 Human Health: When installing metal partitions, there are potential human health issues that should be considered. These may include:

2.4.1. Inhalation of Dust: During the installation process, metal particles or dust may be generated. Prolonged inhalation of metal dust can irritate the respiratory system and may lead to respiratory issues or lung damage. It is important to wear appropriate respiratory protection, such as a dust mask, to minimize exposure.

2.4.2. Eye and Skin Irritation: Metal partitions may have sharp edges or burrs that can cause cuts or abrasions. Additionally, contact with metal surfaces or dust may cause skin irritation or allergic reactions. It is advisable to wear protective gloves and clothing to prevent direct contact with the metal and to minimize the risk of injury or irritation.

2.4.3. Noise Exposure: The installation process of metal partitions may involve the use of power tools or machinery, which can generate high levels of noise. Prolonged exposure to excessive noise levels can lead to hearing loss or other auditory issues. Wearing appropriate hearing protection, such as earplugs or earmuffs, is essential to minimize the risk of noise-induced hearing damage.

2.4.4. Ergonomic Considerations: Installing metal partitions often requires physical exertion, such as lifting heavy materials or working in awkward positions. Poor ergonomics can lead to musculoskeletal disorders, including strains, sprains, or back injuries. It is important to follow proper lifting techniques, use assistive equipment when necessary, and take regular breaks to prevent overexertion and reduce the risk of injury.

2.4.5. Electrical Hazards: If the installation involves electrical components, there is a risk of electrical shock or other electrical hazards. It is crucial to ensure that all electrical connections are properly installed and that appropriate safety measures, such as turning off power sources, are followed to prevent accidents.

HadleySPEC WARRANTED SYSTEM

2.4.6 Ingestion Hazards: of metal particles or dust during the installation of metal partitions is not a common or expected route of exposure.

To minimize the risk of ingestion, it is important to follow good hygiene practices, such as washing hands thoroughly with soap and water before eating or drinking and avoiding eating or drinking in the work area. Additionally, maintaining a clean work environment and properly disposing of any metal waste or debris can help reduce the potential for accidental ingestion.

To mitigate these health risks, it is recommended to follow safety guidelines provided by the manufacturer, use appropriate personal protective equipment (PPE), and ensure proper training and supervision for the installation process. Additionally, maintaining good ventilation in the work area can help reduce the concentration of airborne particles and improve overall air quality.

Section 3: Composition/Information on Ingredients

General composition: Mild Steel sections using zinc electrolysis process, or some sections are treated using hot dipped galvanisation.

Section 4: First Aid Measures

Inhalation of Dust:

Move the affected person to fresh air. If symptoms persist, seek medical attention.

Eye Irritation:

Rinse eyes thoroughly with water for several minutes, do not rub eye. Remove contact lenses if present and easy to do. Seek medical attention if irritation persists.

Skin Irritation:

Wash affected area with soap and water. If irritation occurs, seek medical attention.
If a wound has occurred, please ensure that the wound is treated appropriately by stopping any bleeding and dressing the wound.

Ingestion

Rinse mouth with water. Do not induce vomiting. Seek medical attention if large quantities are ingested.

Section 5: Firefighting Measures

Suitable Extinguishing Media:

Use extinguishing media appropriate for surrounding fire.

Specific Hazards Arising from the Substance or Mixture:

None known.

Protective Equipment and Precautions for Firefighters:

Wear self-contained breathing apparatus and protective clothing to prevent exposure.

Section 6: Accidental Release Measures Personal Precautions, Protective Equipment, and Emergency Procedures

Wear appropriate personal protective equipment (PPE). Avoid dust formation. Ensure adequate ventilation.

Environmental Precautions:

Prevent material from entering drains or waterways.

Methods and Material for Containment and Cleaning Up:

Collect spilled material using suitable tools. Place in a labelled waste container for proper disposal.

Section 7: Handling and Storage

Precautions for Safe Handling:

Avoid inhalation of dust. Use with adequate ventilation. Wear appropriate PPE.

Conditions for Safe Storage:

Store in a cool, dry place away from incompatible materials.

Wash hands thoroughly after use, ensure you do not eat or drink whilst using this product.

Section 8: Exposure Controls/Personal Protection Control Parameters:

No specific occupational exposure limits established.

Exposure Controls:

Ensure adequate ventilation. Use appropriate respiratory protection if ventilation is insufficient. Wear suitable protective gloves and eye/face protection.

Section 9: Physical and Chemical Properties

Appearance: Solid metal

Odour: Odourless

Melting Point: Varies depending on the specific metal

Boiling Point: Varies depending on the specific metal

Solubility in Water: Insoluble

Section 10: Stability and Reactivity

Stability: Stable under normal conditions.

Conditions to Avoid: None known.

Incompatible Materials: Acids & Alkalis

Hazardous Decomposition Products: None known.

Section 11: Toxicological Information

Acute Toxicity:

No data available.

Skin Corrosion/Irritation:

No data available.

Serious Eye Damage/Irritation:

No data available.

Respiratory or Skin Sensitization:

No data available.

Germ Cell Mutagenicity:

No data available.

Carcinogenicity:

No data available.

Reproductive Toxicity:

No data available.

Specific Target Organ Toxicity (Single Exposure):

No data available.

Specific Target Organ Toxicity (Repeated Exposure):

No data available.

Aspiration Hazard:

No data available.

Section 12: Ecological Information

Ecotoxicity:

No data available.

Persistence and Degradability:

No data available.

Bioaccumulative Potential:

No data available.

Mobility in Soil:

No data available.

Results of PBT and vPvB Assessment:

Not applicable.

Other Adverse Effects:

No data available.

Section 13: Disposal Considerations

Waste Treatment Methods:

Dispose of in accordance with local, regional, and national regulations.

Where possible ensure waste is minimised and products are reused or recycled.

Section 14: Transport Information

Not regulated for transport.

Section 15: Regulatory Information

This product is not classified as hazardous according to current regulations.

Section 16: Other Information

Abbreviations and Acronyms used in this MSDS

PPE – Personal Protective equipment

PBT – Persistent, Bioaccumulative and Toxic Substances

vPvB – Very Persistent and Very Bioaccumulative

General Information:

The information included within this SDS is provided for information only.

This safety data sheet contains information based on our current knowledge and experience. It describes the safety requirements for this product and should not be construed as a guarantee of specific properties.

Training or installation advice can be found on our website or by contacting our expert Technical Support Team.

Revision Information

Version 1

Date: August 2023

Declaration of Performance

Construction Products Regulation



Identification of the product-type:

Hadley 'C' Studs, Hadley 'I' Studs, Hadley Acoustic Studs, Hadley 'U' Tracks, Hadley Deep Tracks, Hadley Extra Deep Tracks, Hadley Liner Studs, Hadley Liner Tracks, Hadley Angles, Hadley MF Ceiling Channels, Hadley Resilient Bar, Hadley Flat Strap.

Any other element allowing identification:

See 'Hadley Drylining Product List' for individual item identification.

Intended use, as foreseen by the manufacturer:

Metal framing components for use with gypsum board systems.

Name and contact address of the manufacturer:

Hadley Industries Holdings Ltd trading as Hadley Group (Products Division),
Gaitskell Way, Dartmouth Road, Smethwick, West Midlands, B66 1BF.

System of AVCP:

System 4

Designated / Harmonised Standard:

EN 14195

Declared Performance:

Essential Characteristic	Performance	Technical Specification
Reaction to Fire	Class A1	EN 14195:2005
Flexural Tensile Strength	NPD	EN 14195:2005

The performance of the products identified above are in conformity with the declared performance. This declaration of performance is issued under the sole responsibility of the manufacturer.

Signed for and on behalf of Hadley Group Products Division by:

Gemma Steadman

.....
Gemma Steadman, Business Unit Director – Hadley Group Products Division
Hadley Industries Holdings Ltd. UK, 30th August 2023

Project Pack

Use the HadleySPEC technical team for a full project pack and specifications to match your project needs and ensure you can claim a HadleySPEC Warranty.

3rd Party Testing

All **HadleySPEC** warranties are covered by the **HadleySPEC Fire Promise**, to never specify systems where we do not have fire test data conducted by a 3rd party UKAS accredited facility. In addition, all systems have been third party tested at UKAS accredited facilities for:

- ✓ Fire compartmentation to relevant British or European standards as identified within our specifications.
- ✓ Laboratory tested acoustic attenuation in accordance with relevant British, European and International standards.
- ✓ Acoustic attenuation modelling
- ✓ Strength and robustness to relevant British standards.
- ✓ In house engineered solutions using cutting edge software solutions.

1.0 Inclusions

HadleySPEC Warranty covers the performance of the specified system for the lifetime of the building when:

- Installed as per Hadley recommendations.
- Installed as per all relevant product manufacturers' installation guidelines.
- Installed as per the Building Regulations, British Standards, and British Standard adopted European Norms relevant to the system and / or project, and as per industry best practice.
- All systems have been properly maintained with no unaccountable alterations made.
- The environment in which the system has been installed suits the specification.
- All systems specified are fit for purpose for the end use.
- All systems have been specified within a HadleySPEC project pack.
- All systems are based upon Hadley Group owned BS EN 1364-1; BS EN 1365-1; BS 476-22 & BS 476-23 fire test data.
- The specified system and project pack have been approved for use by the project design team and principal designer.

2.0 Exclusions

HadleySPEC Warranty does not cover the performance of the specified system for the lifetime of the building when:

- Any system is used in a non-standard way.
- Any incompatible components or systems have been used together.
- Deliberate or otherwise damage or destruction of any part of the system occurs.
- The buildings and / or systems have not been properly maintained professional negligence by the installing contractor or any other party occurs.
- Force majeure occurs.
- Damage due to ingress of water and / or mould, mildew or any other organic organism occurs.
- There has been a failure to install in line with aforementioned recommendations and / or a failure to provide work to the standard of a specialist installing contractor.
- The project design team and the principal designer has not approved the system and project pack.
- Systems, materials or components are in contravention of Hadley Groups terms and conditions of sale.
- A project specific and signed copy of the HadleySPEC Warranty has not been completed.

3.0 Warranty Application

In order to claim under the HadleySPEC Warranty the following information must be gathered by the direct trading customer and supplied to Hadley Group:

- Evidence of sales for products (or proof of purchase) matched to the systems specified within the HadleySPEC to the quantities required for the project.
- Evidence all installations have been conducted by a specialist installing contractor.
- Evidence all installations have been completed in line with Hadley recommendations, Building Regulations in relation to the project, full British Standards, and British Standard adopted European Norms.
- Evidence the specification and project pack have been approved by the project design team and the principal designer.
- Evidence the direct trading customer has settled any balances due between Hadley Group and the direct trading customer.
- Confirmation of any products or systems used that may have any impact upon the performance of our specified systems e.g. fixings to superstructure, plywood; tiles etc.

All of this information must be supplied to Hadley Group within 14 days of the original discovery of any defect that has led to the performance standard not being met. Any late claims will not be considered.

Upon receipt Hadley Group must be given the opportunity to thoroughly inspect the affected systems - through destructive and non-destructive means as required within a reasonable timeframe.

After investigation should it be found that the system is defective due to the performance stated not being achieved, notwithstanding any of the aforementioned statements, then Hadley Groups will:

- Repair the system defect;
- Replace any defective part of the system;
- Issue a credit note to the direct trading partner up to, but not exceeding, the value of the defective part only; and no other associated costs will be considered.

4.0 Transfer of Warranty

The HadleySPEC Warranty is transferable an unlimited number of times to future owners of the building covered by the warranty, provided that such transfers occur within the original 60-year warranty period.

Conditions of Transfer

The warranty will remain valid for any future owner of the building, provided that:

- The systems and components covered by the HadleySPEC Warranty have been installed and maintained in accordance with Hadley Group's recommendations, applicable Building Regulations, British Standards, and British Standard-adopted European Norms.
- No alterations or modifications have been made to the covered systems without the prior written approval of Hadley Group.
- The building has been used and maintained in a manner consistent with the intended purpose for which the HadleySPEC Warranty was issued.

Notification of Transfer

Written notice of each transfer, including the details of the new building owner, must be provided to Hadley Group within 60 days of the transfer. Failure to notify Hadley Group within this timeframe may affect warranty coverage for the new owner.

Limitations

- The transfer of the HadleySPEC Warranty does not extend or modify the original 60-year warranty period as specified in the warranty documentation.
- Any claim under the transferred warranty must be made in accordance with the original terms and conditions of the HadleySPEC Warranty, and any such claim must be submitted in writing, with all necessary supporting documentation, to Hadley Group within the warranty period.

Exclusions

The HadleySPEC Warranty does not cover any loss or damage resulting from:

- Improper or unauthorised modifications, repairs, or installations.
- Misuse, neglect, or failure to maintain the building in line with industry best practices.
- Force majeure events, such as flood, or natural disasters.

Applicable Law

This Warranty and its transfer shall be governed by and construed in accordance with the laws of England and Wales and the laws of Ireland. Any disputes arising in relation to this Warranty shall be subject to the exclusive jurisdiction of the courts of England and Wales or the courts of Ireland, depending on the location of the building in question.

Please note:

The customer, direct or indirect, shall be responsible for all costs or expenses arising from the removal, disposal and / or subsequent replacement of any materials that may cover or conceal or otherwise restrict or impede access to the Hadley system.

Hadley Group bear no liability in respect of any destructive works undertaken in order to inspect suspected defective systems by direct / indirect customers or by Hadley Group.

If any suspected defect is found not to be the responsibility of Hadley Group, the direct trading customer will indemnify Hadley Group in full for all associated costs for the investigation and subsequent administration.

All claims must be submitted in writing to Hadley Group, Downing Street, Smethwick, Birmingham, B66 2PA.

The HadleySPEC Warranty should be read in conjunction with Hadley Group terms and conditions of sale; all associated collateral warranties and professional indemnities; and all preliminary and general clauses within specification documents.

Joe Sargeantson

Director of Technology, Hadley Construction Technology

Ben Towe

Group Managing Director, Hadley Group

Revision	Date	Comment	By	Chkd	App
1.0	19/08/24	First Issue	FM	SH	JS



Hadley Group HQ, Downing Street, Smethwick,
West Midlands,
B66 2PA

+44 (0) 121 555 1300
+44 121 820 6500
hct@hadleygroup.com