

# HadleySOLO

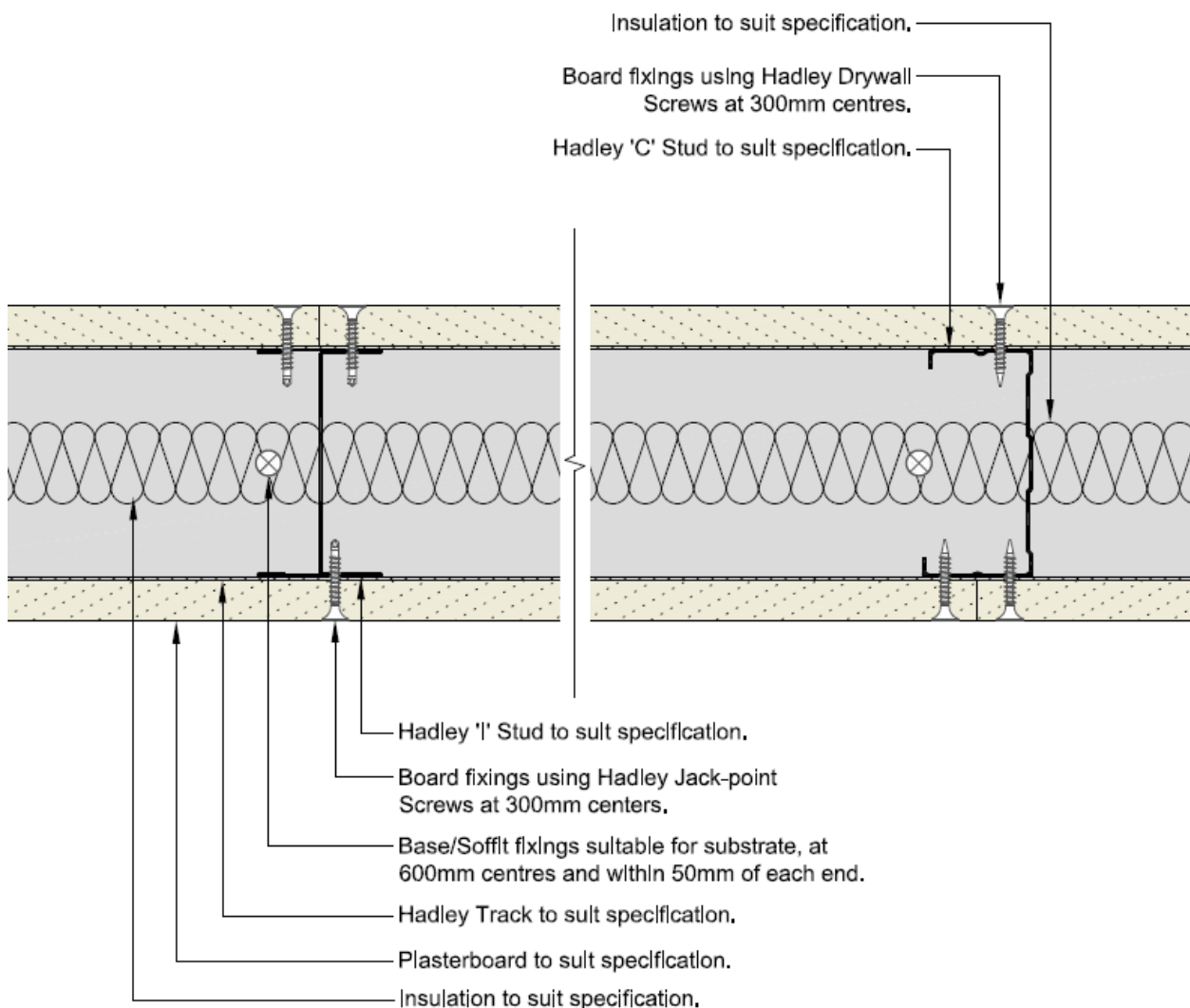
Installation Guide – Method Statement



# HadleySOLO

HadleySOLO is a single-stud solution suitable for the widest variety of applications. Lightweight and easy to install, this HadleyDRYLINING system will help reduce installation time on site – whilst giving you the assurance that your chosen system will achieve the required acoustic and fire performance.

This method statement covers the construction of a single stud drywall partition. The partition will be installed in a building to create a non-load-bearing wall using metal Hadley studs and gypsum plasterboards (drywall), and associated fixings.



## MATERIALS

- Hadley C or I Studs
- Hadley Track
- Gypsum Plasterboard
- Drywall Screws
- Jointing compound
- Joint Tape
- Corner beads (if needed)
- Insulation (to suit specification)
- Intumescent and acoustic sealant
- Hadley Angle (if required)

## TOOLS

- Power Drill
- Screwdriver
- Measuring Tape
- Spirit Level
- Chalk Line
- Trowel

## PPE

- High visibility wear
- Steel-Toe Cap shoes
- Hard Hat
- Gloves
- Safety Glasses
- Hearing Protection

# PREPARATION

### Risk Assessment

Conduct a risk assessment before starting work. Highlight any specific risks such as working with power tools or working at height (if applicable).

### Site Survey

Confirm the location and dimensions of the partition as per the approved specification and HadleySOLO Standard details.

### Check Structural Elements

Ensure that the ceiling and floor structure is suitable for fixing the partition.

### Prepare Tools and Materials

Ensure all required tools and materials are on site and in good working order.

**Make sure you are following all recommended industry and company H&S standards and policies.**

# INSTALLATION GUIDE

## HadleySOLO

### Mark the Partition Location:

Mark the position of the partition on the floor, ceiling, and walls using a chalk line. Double-check measurements and ensure the partition aligns with any doors, windows, or adjacent walls.

### 1 Perimeter Framework

Lay the bottom Hadley track along the marked line on the floor and the top Hadley track along the ceiling, ensuring they are level and parallel.

Secure the bottom Hadley track using appropriate fixings (screws or nails) to the floor slab or subfloor.

Similarly, fix the top Hadley track to the ceiling structure, ensuring it is level with the bottom Hadley track.

Each Hadley track should be laid in 2 continuous beads of Intumescent Sealant with the use of suitable fixings to secure the head and base track into the existing substrate. These fixings are required at a maximum 600mm centres and within 50mm of the start and end of each Hadley track.



### 2 Cut and Install Hadley Studs:

Measure and cut the Hadley studs to the required length, ensuring they fit snugly between the top and bottom Hadley tracks.

Place the Hadley studs into the Hadley tracks, spaced according to the design.

Hadley C or I Studs are recommended to be placed within the Hadley track at maximum 600mm centres or less depending on the system's specifications. Hadley studs are just friction fitted into the Hadley track by twisting them in place.

There is no requirement to screw the Hadley studs into the Hadley track at the metal framework will become more secure once plasterboard has been screwed in.



For heights that exceed the maximum manufacturer stud length, the Hadley studs would require to be spliced as per our recommended splicing detail. DRY-HAD-XX-ZZ-DT-X-1912

### 3 Install Plasterboard:

Cut the plasterboard to fit the wall dimensions (height and length).

Lift the plasterboard into place and align it with the Hadley studs.

Plasterboard should be Screw fixed at maximum 300mm centres with centres reduced to 200mm at all corners.

To ensure the best performance our systems have all been tested with the use of a continuous Intumescent and Acoustic Sealant under all abutments.

All horizontal joints should be staggered by 300mm, and all vertical joints should be staggered by 600mm as far as practical.



### 4 Jointing:

To help maintain performance we recommend all joints are taped and jointed.

Apply joint compound to the joints between Plasterboard and embed joint tape into the compound.

Smooth out the compound, ensuring a seamless finish.

Apply additional coats of joint compound as necessary, allowing drying time between coats.

Sand the joints once dry for a smooth finish.



### 5 Install Corner Beads (if required):

For external corners, attach corner beads using screws or adhesive. Apply joint compound over the corner beads and smooth to achieve a clean, straight corner.

### 6 Insulation (if specified):

If insulation is required, install it between the Hadley studs or as noted within the specification before applying the plasterboard. Following the Insulation manufacturer's instructions

## 7 Final Check:

Ensure the partition is level and square in accordance with BS8000-8:2023

Inspect drywall joints and finishes for smoothness and uniformity.

Clean the work area, removing any debris or leftover materials.

- **Quality Control**

Check the alignment and level of the partition regularly during installation.

Verify that all joints and corners are finished smoothly and without visible defects.

Ensure all Plasterboards are securely fastened and that screws are not overdriven.

- **Completion**

Once the partition is installed and the jointing is complete, allow sufficient time for drying. The partition should be ready for painting or further finishing as specified.

- **Hand Over**

Ensure the area is clean and safe before handover.

Provide any necessary documentation, such as material specifications or maintenance instructions.

All installations should comply with Hadley Group recommendations, BS8000-8 2023 and all other relevant guidance and regulations. If anything is unclear, please contact us for further clarification.

**For further information on how to construct more bespoke detailing the below please refer to our HadleyDRYLINING Standard Details where we have examples of deflection heads - openings - door openings - socket boxes - movement control joints & more.**

Your questions answered.

You can rely on the Hadley Group to provide full specification and detailed system data with technical drawings tailored to your project needs.

With years of experience, our Technical Team will work closely with you to provide advice through our support hotline [0121 555 1329](tel:01215551329), open 8:30-17:00 Monday to Friday (exc. Bank holidays).

DRY-HAD-XX-ZZ-TE-X-300

	Date	Prepared	App' HCT #1	App' HCT #2	Notes
1.0	11/11/2024	FM	FM	JS	First Version



Hadley Group, Downing Street,  
Smethwick, West Midlands,  
B66 2PA

+44 (0) 121 555 1300  
+44 121 820 6500  
[hct@hadleygroup.com](mailto:hct@hadleygroup.com)